

Frottage

[fr. pocieranie] frottage

Opracowanie prezentacji oraz ilustracje:
Jolanta Motylińska

**Frotaż = szybkie
cieniowanie
i odbijanie wzorów
(nadawanie
faktury).**

**Frotaż można robić
ołówkiem, kredkami,
kredkami
świecowymi, węglem
do rysowania.**

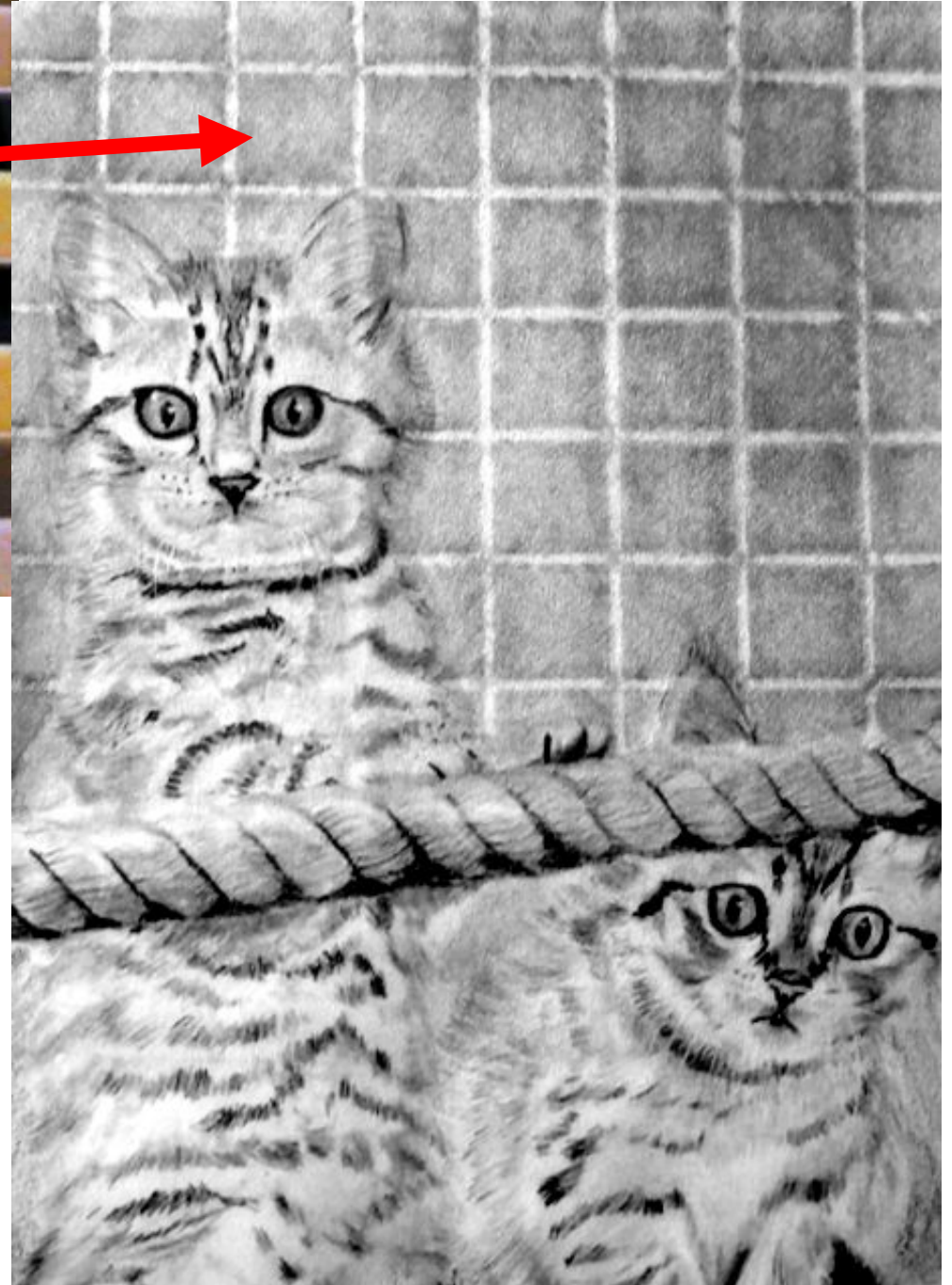
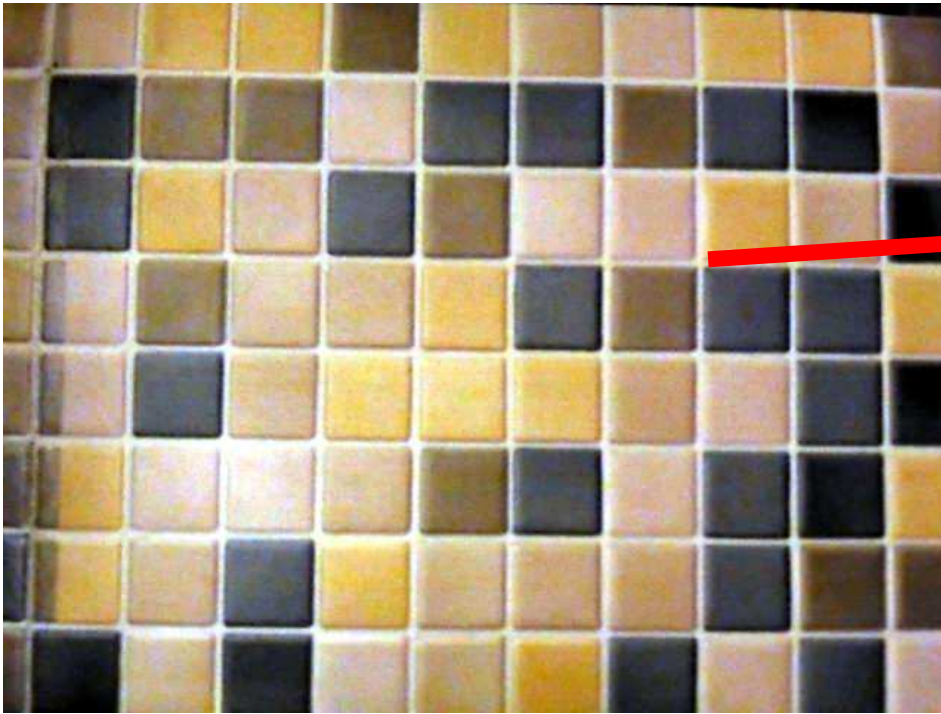
**Do rysowania faktur najlepsze są ołówki
bez oprawy drewnianej
= tzw. bezdrzewne:**



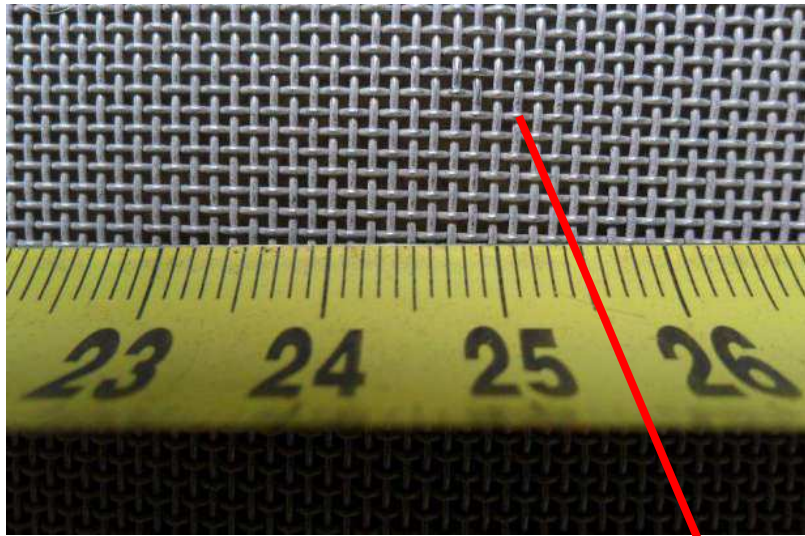
W domu i na dworze jest wiele przedmiotów o ciekawej powierzchni, którą można odbijać na papierze: tarka, cegła, deska, arkusz papieru ściernego, czysta podeszwa buta, pilnik, moneta, muszelka, kamyk, liść, tapeta, płótno, szorstka tkanina, kora drzewa itp.

**Warto zacząć zbierać
takie przedmioty, bo
przydają się
w rysowaniu, a nawet
podpowiadają tematy
rysunkowe.**

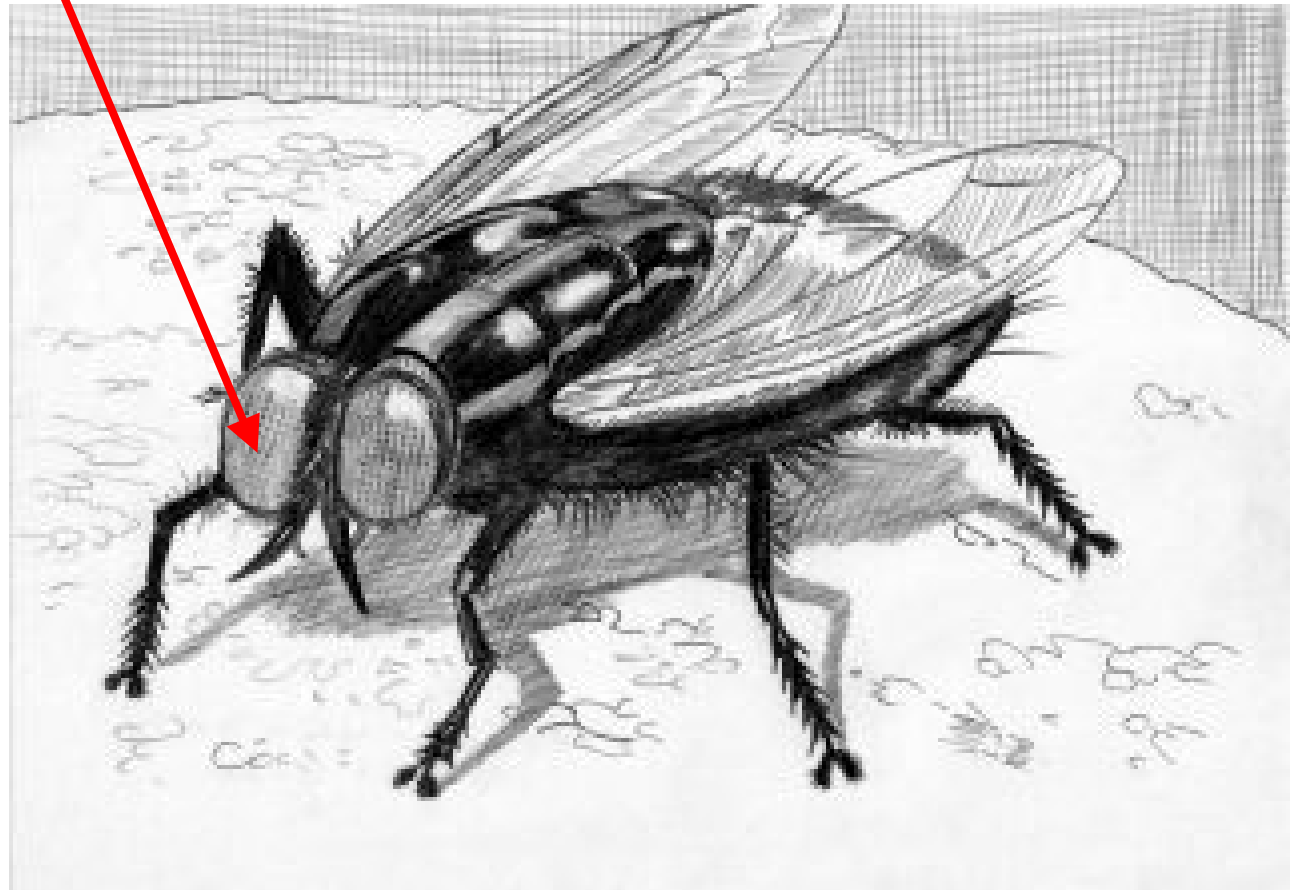
Przykłady

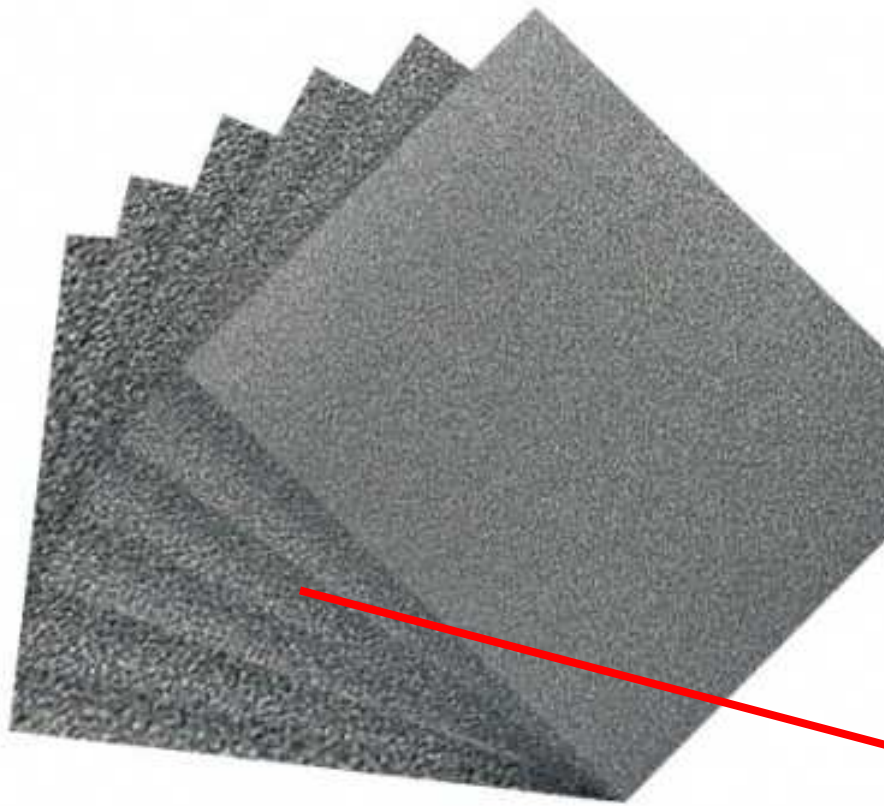


Tło kotków z wykorzystaniem kratkowanej tapety.



Oczy muchy wykonane na siatce metalowej.

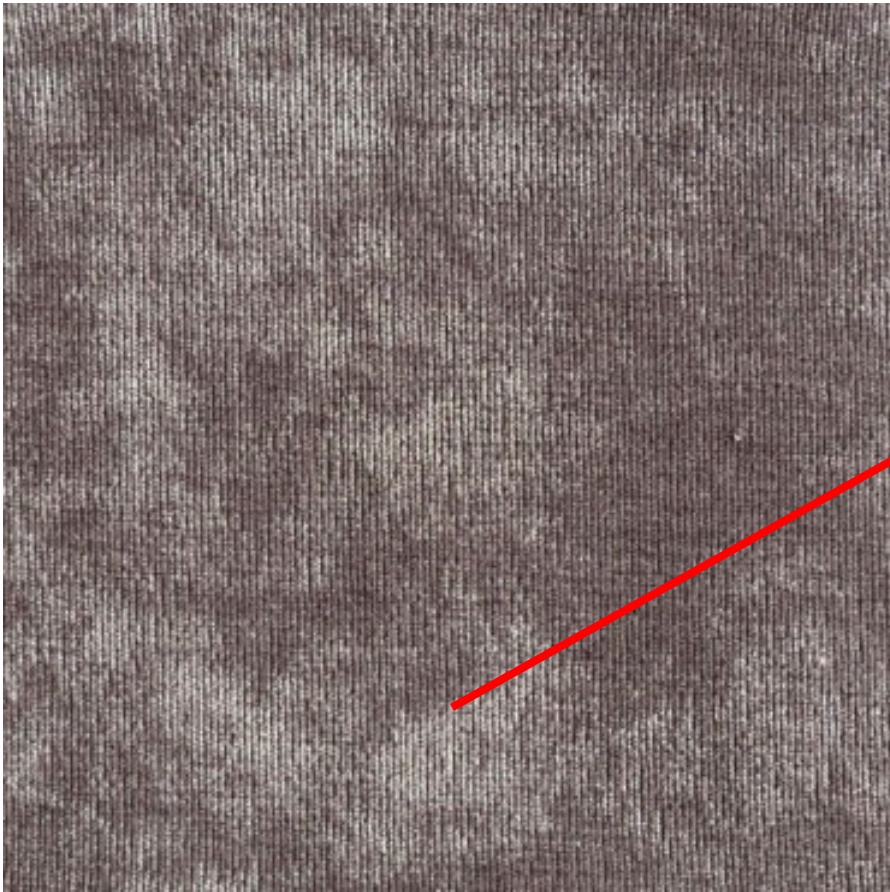




Tło za końmi wykonane na papierze ściernym.

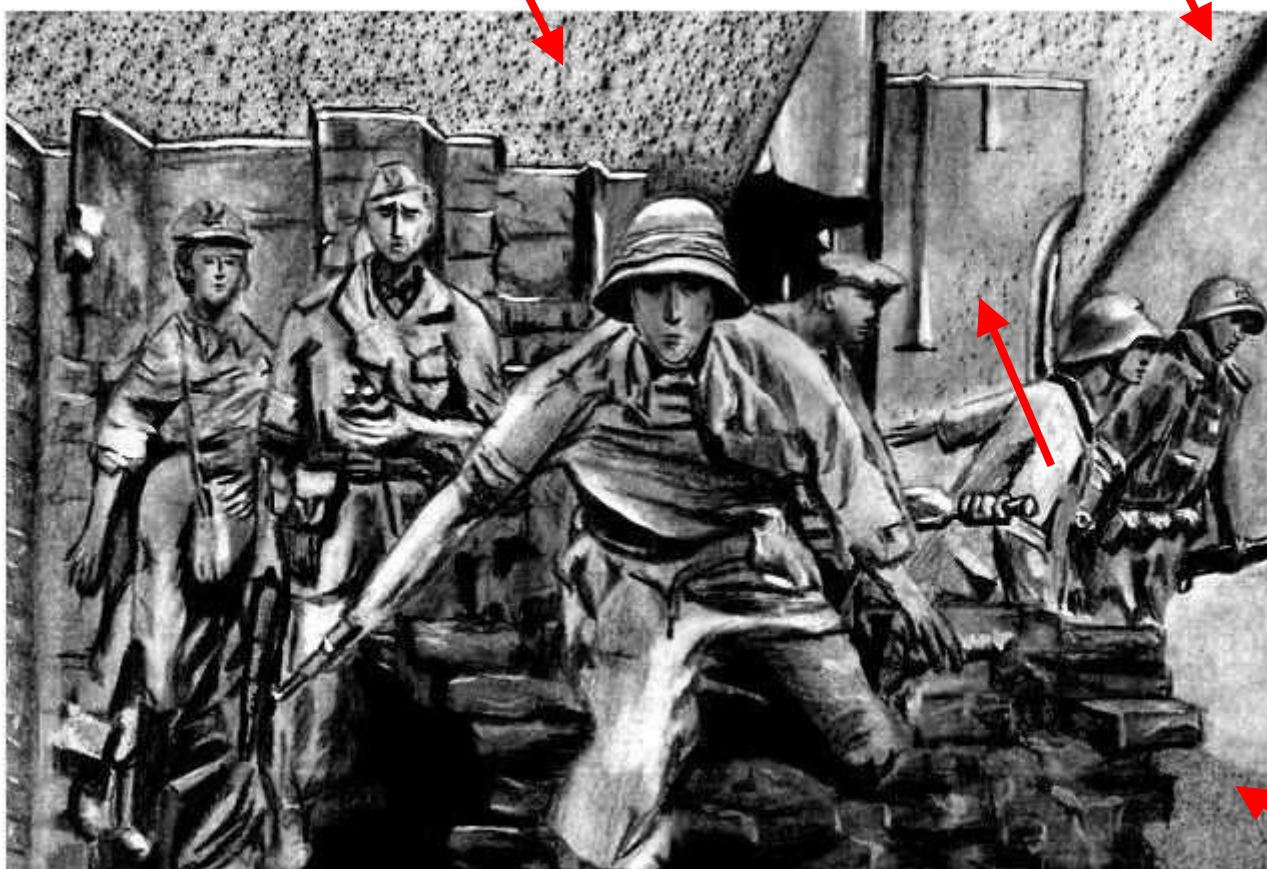


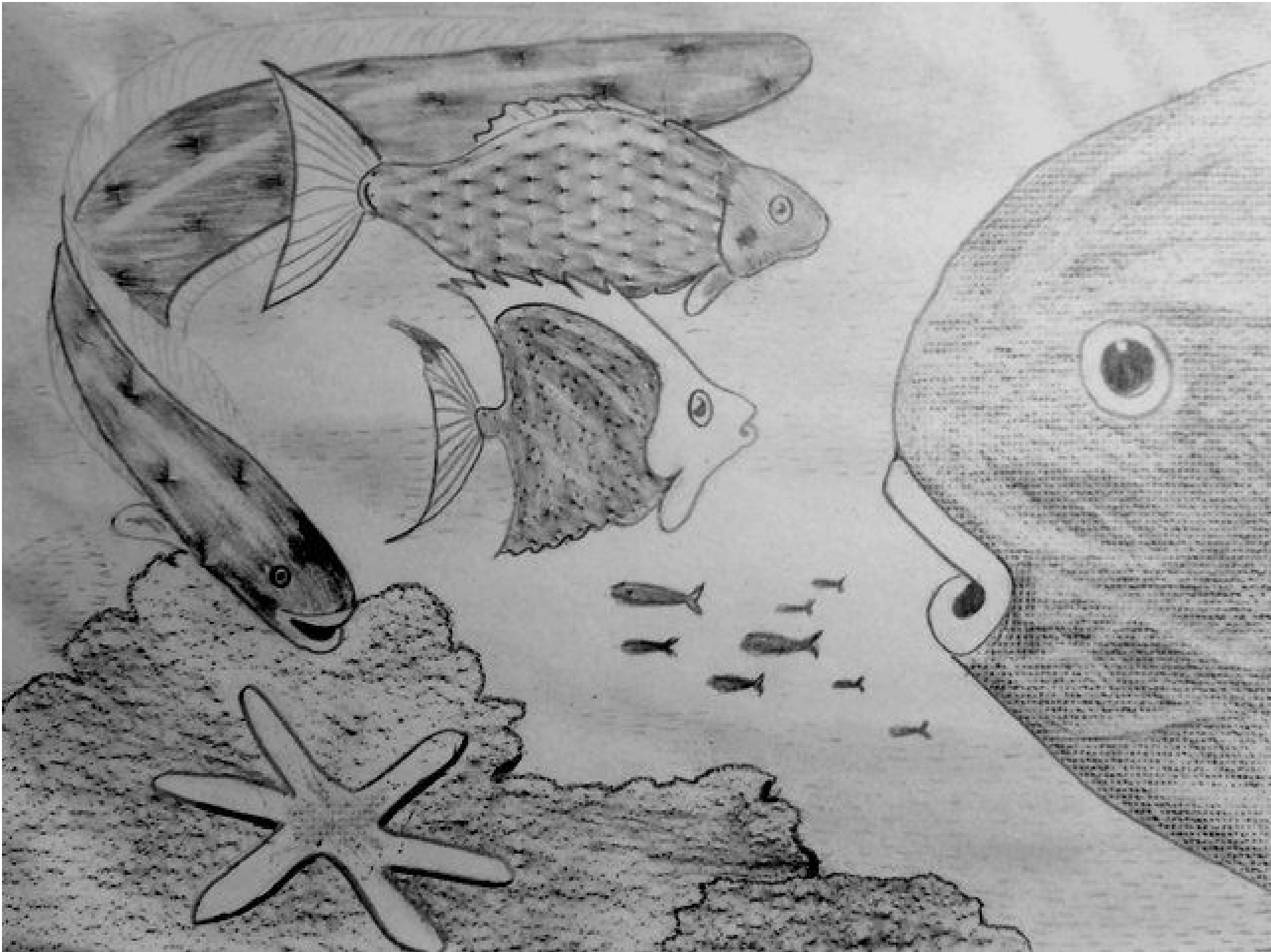
*Faktura krawatu otrzymana
na papierze ściernym.*

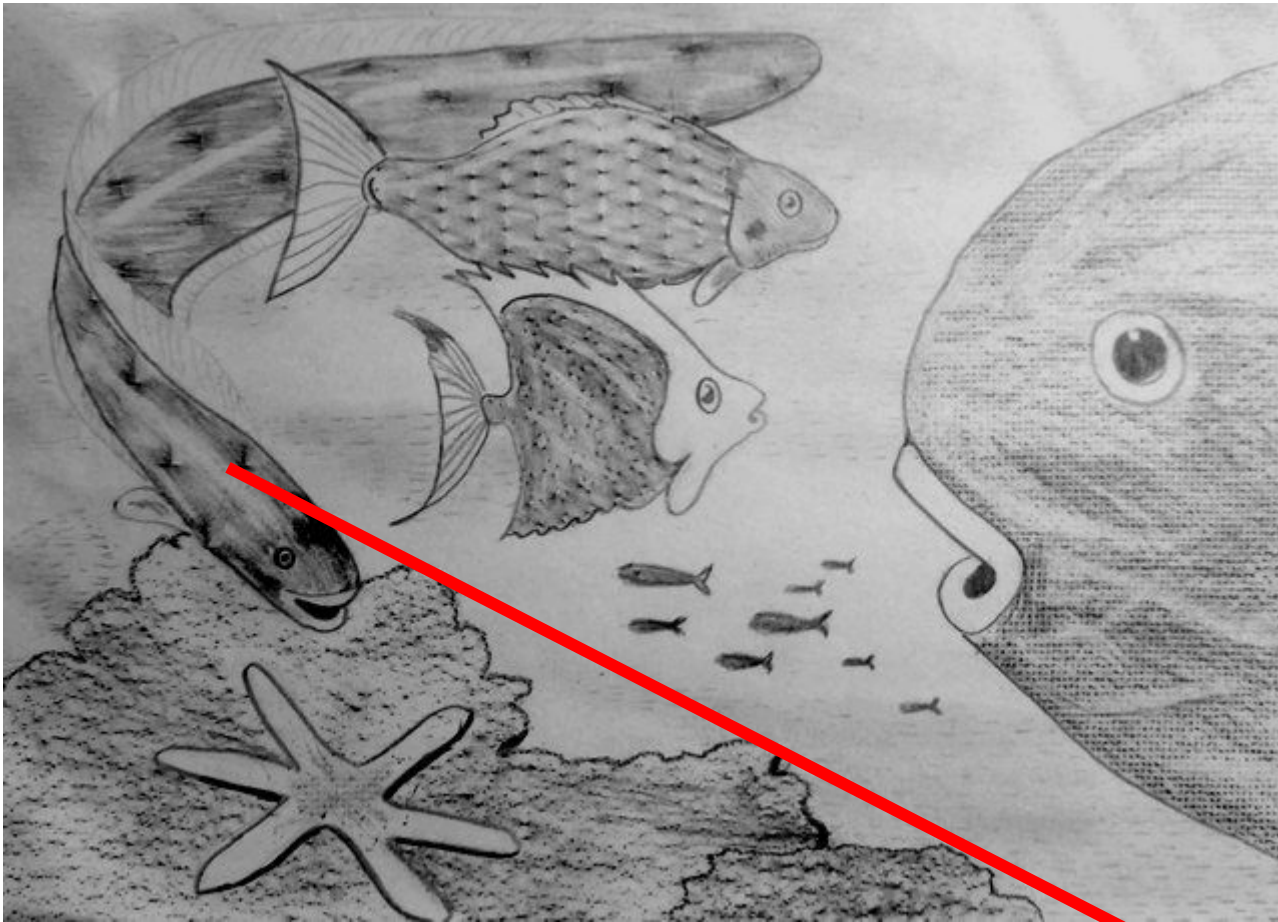


Tło na tkaninie tapicerskiej.

Faktura pomnika otrzymana na różnych rodzajach papieru ściernego.

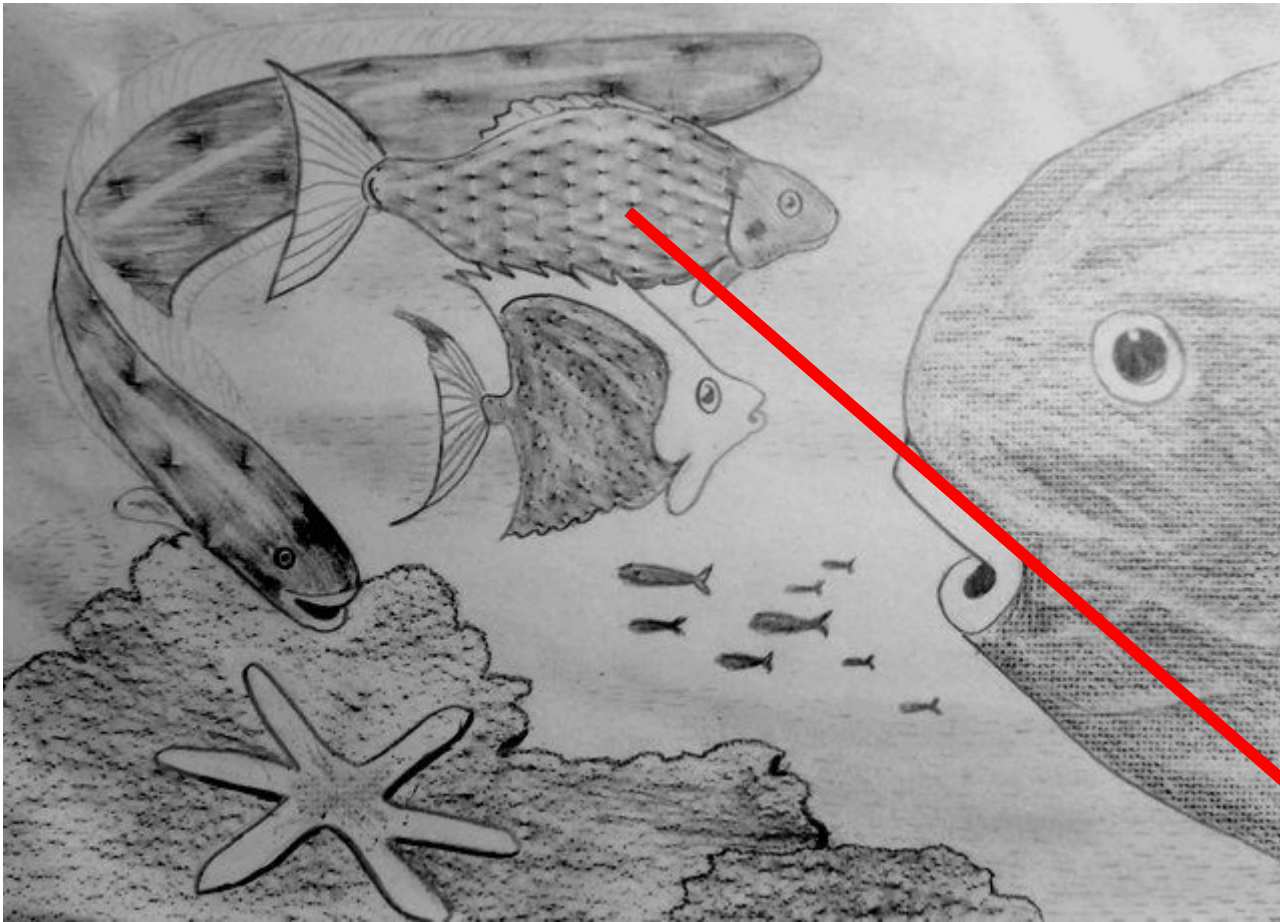






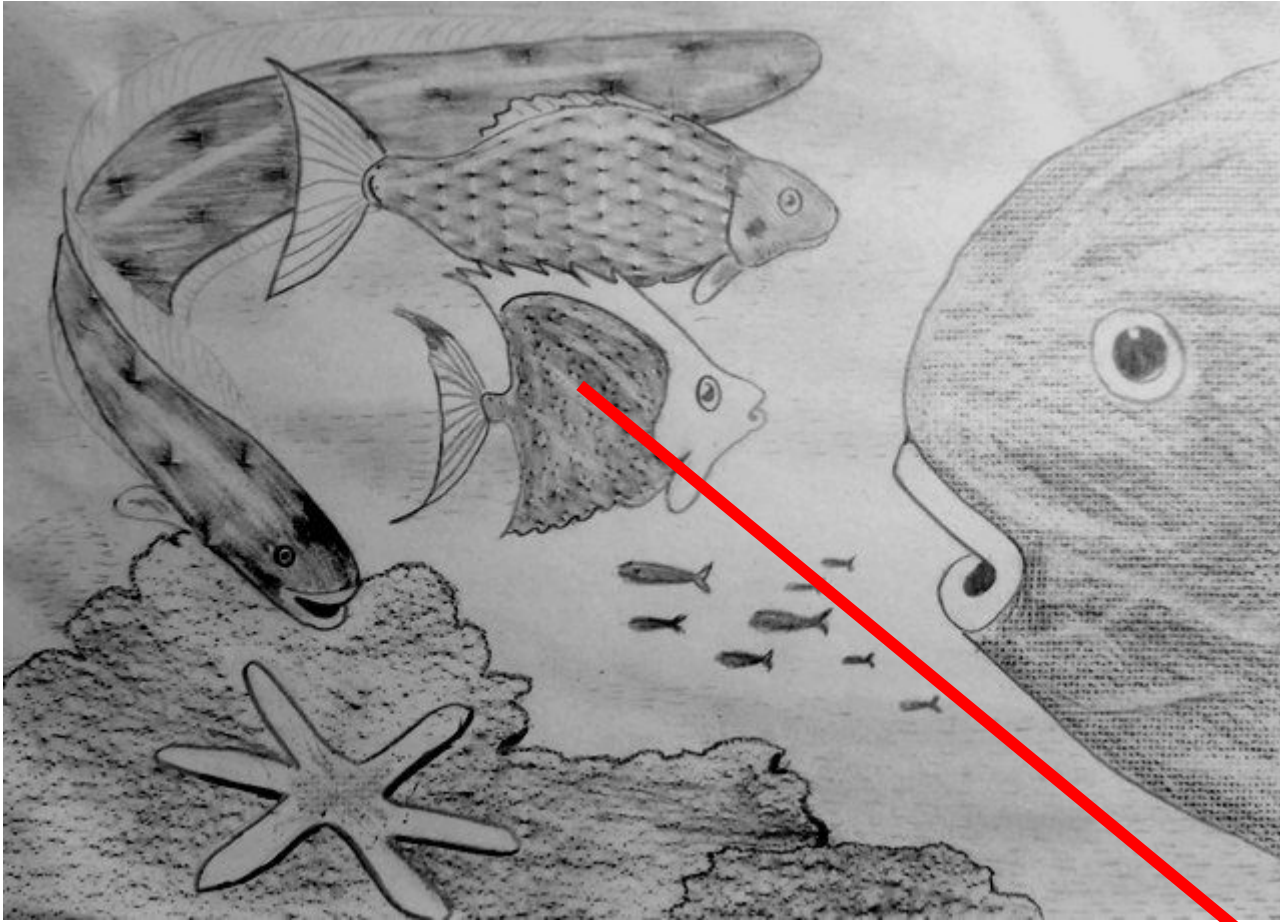
Tarka.





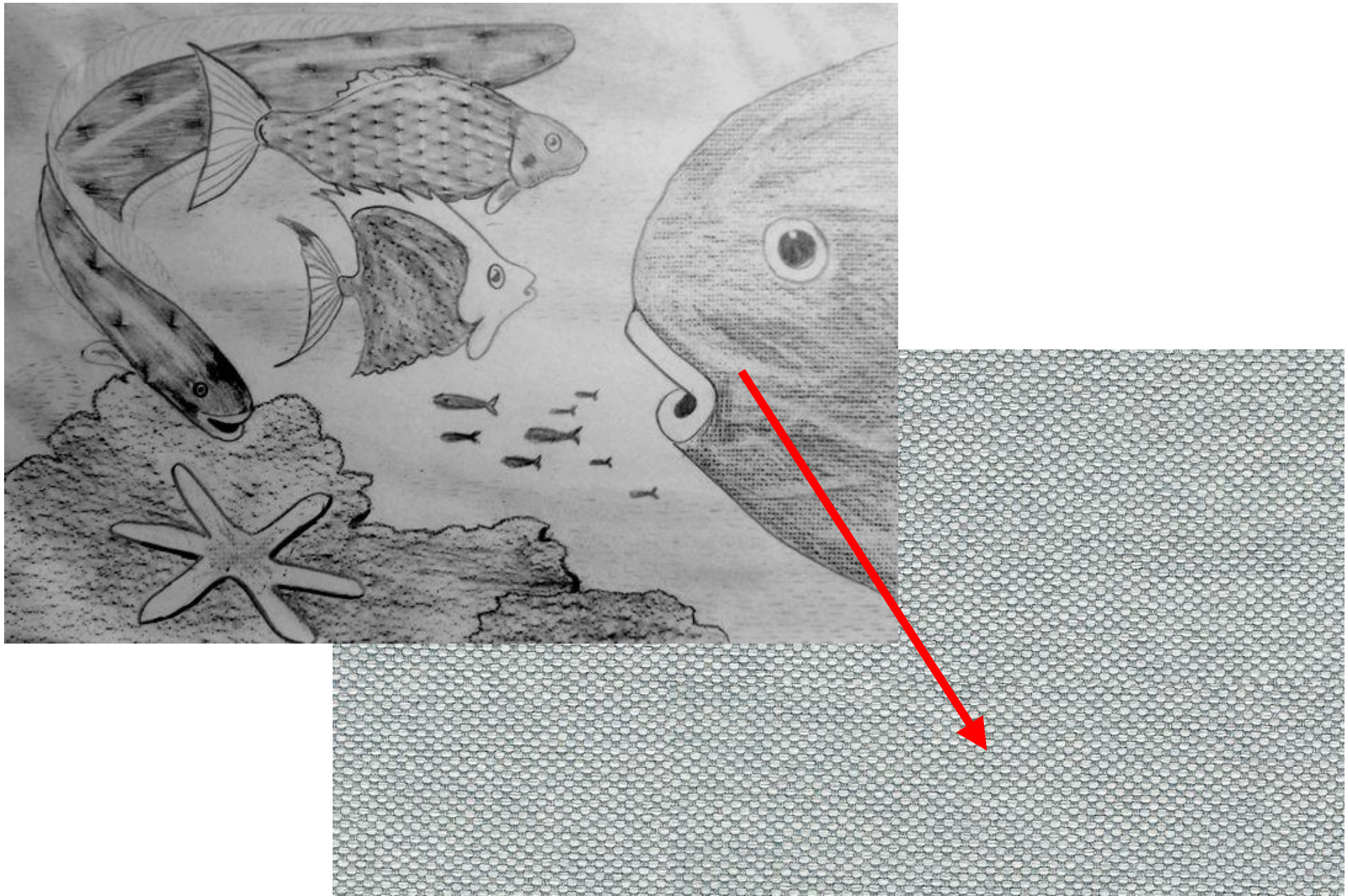
Tarka.



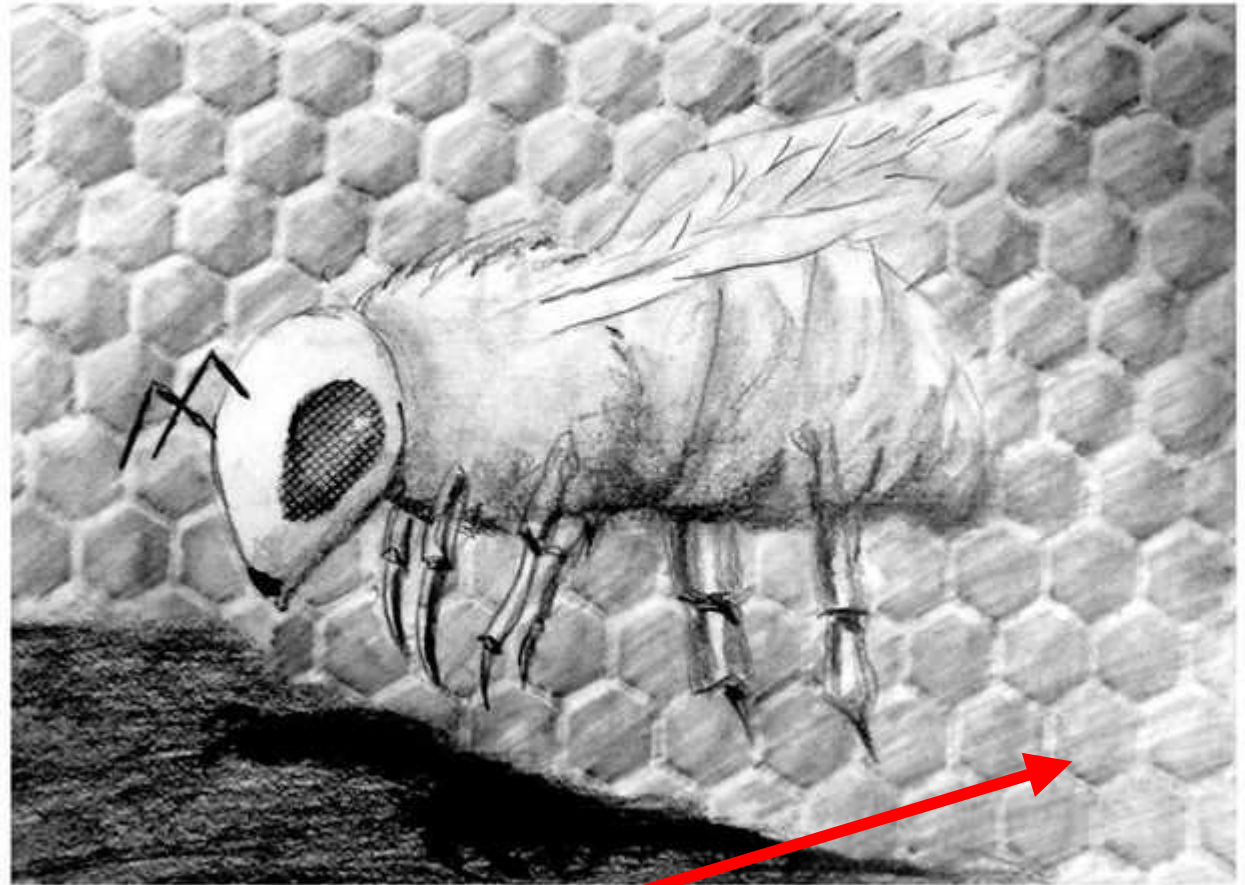
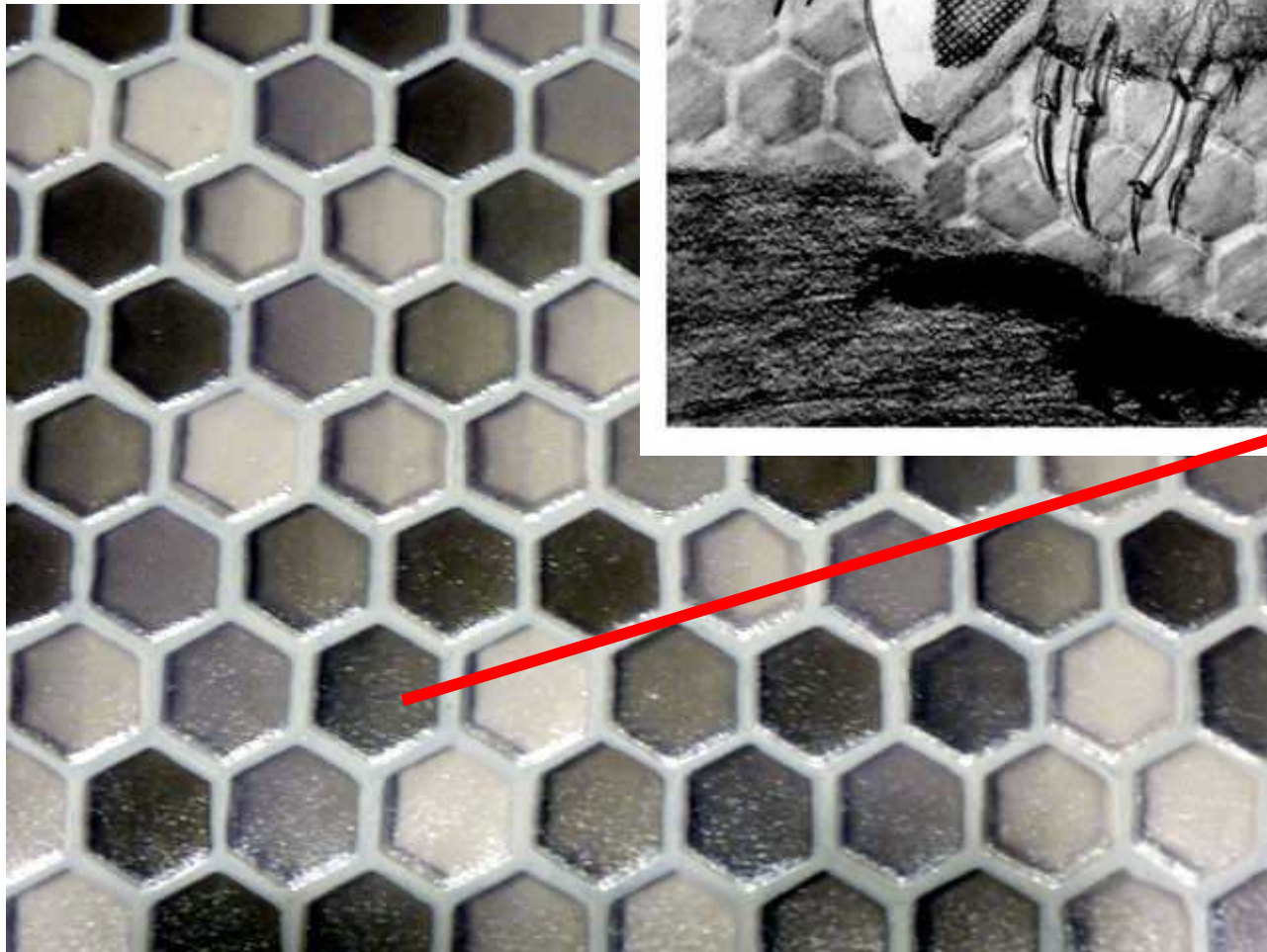


Tarka.

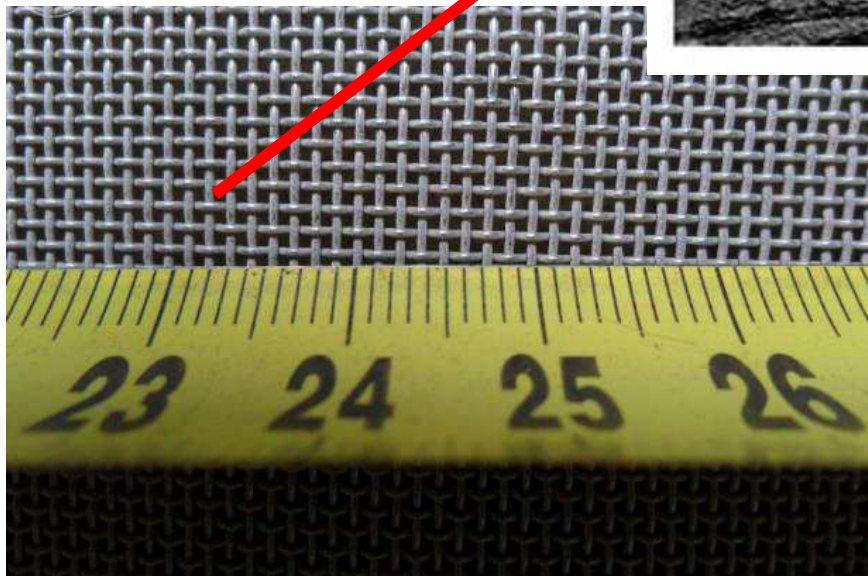
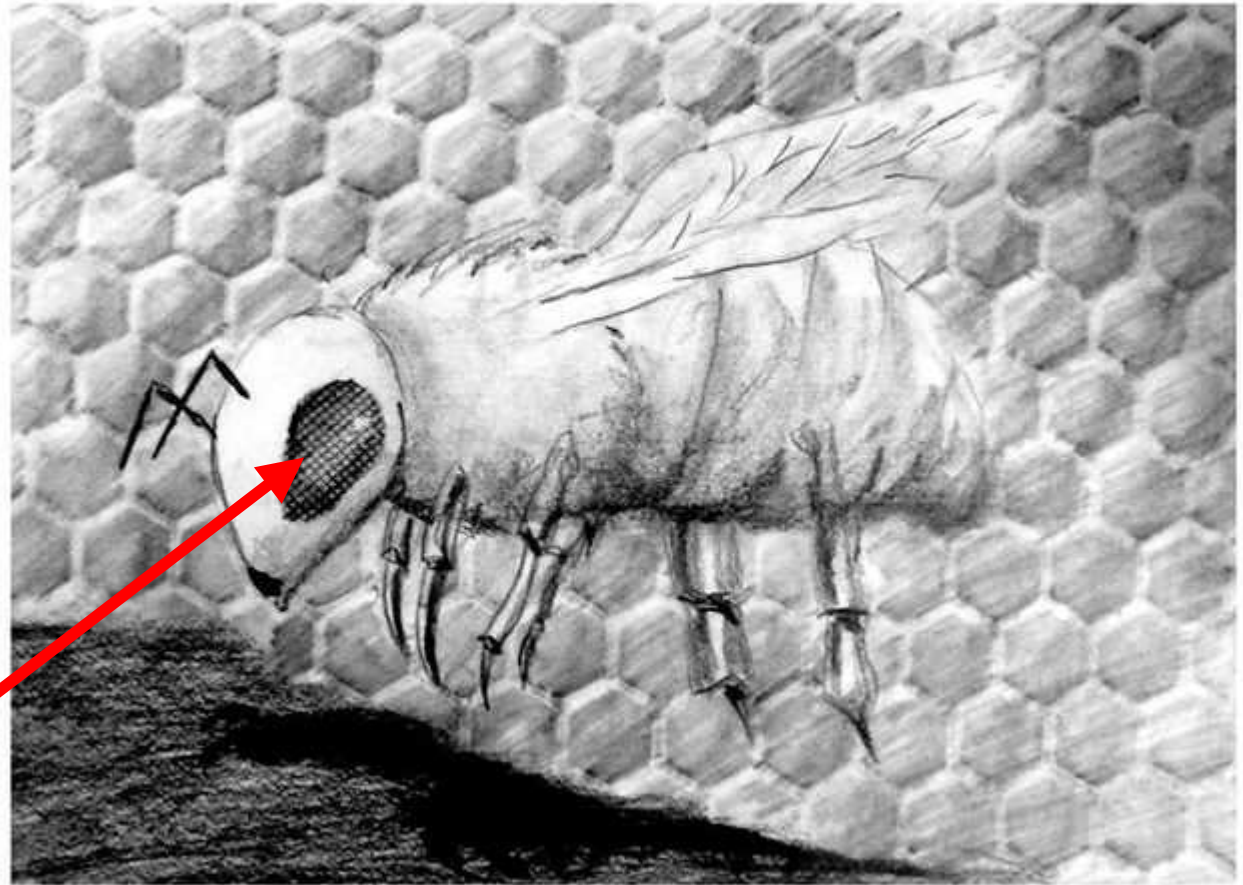




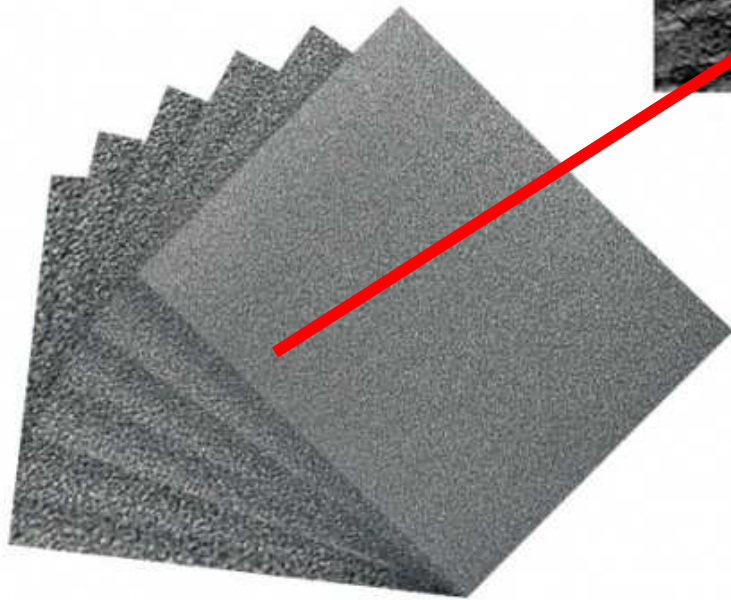
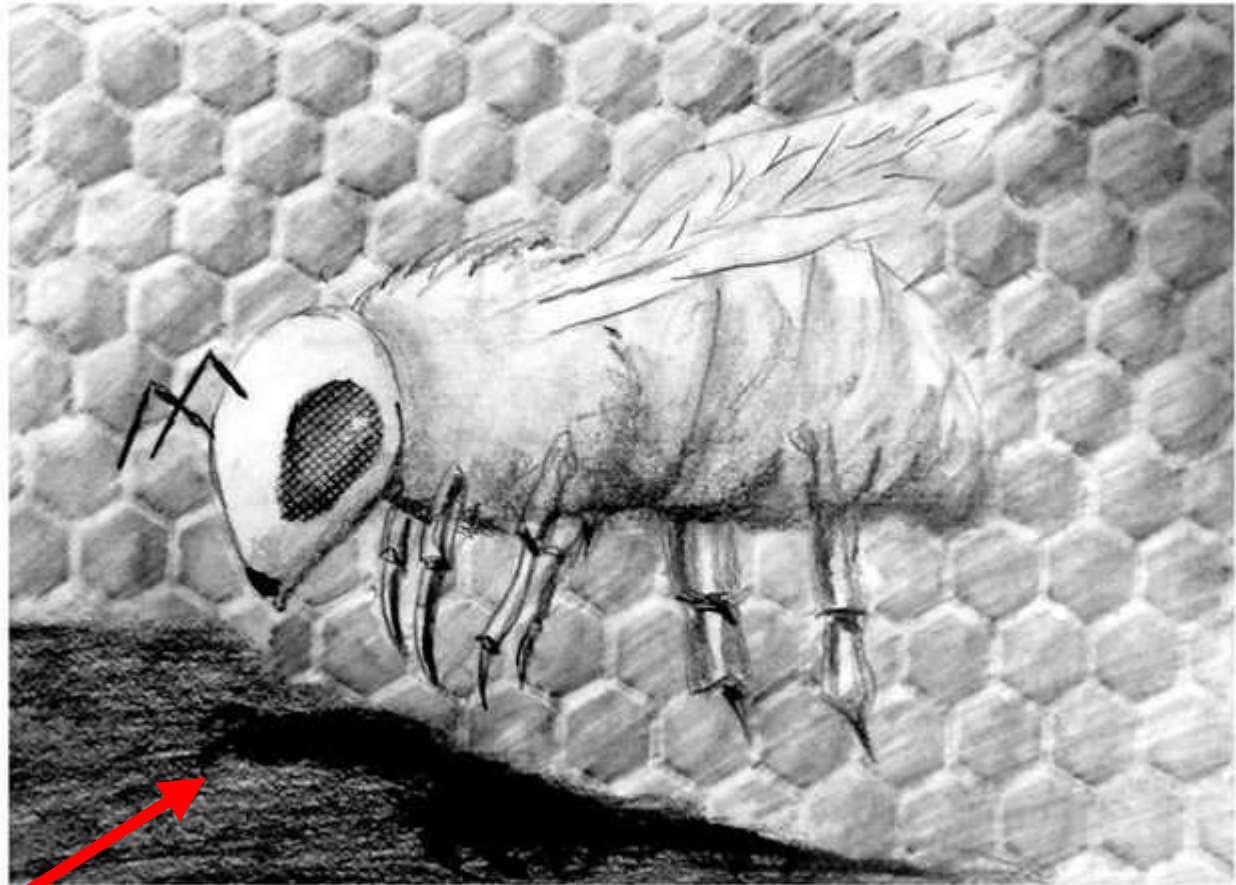
Tkanina – podkładka śniadaniowa.



Tapeta.

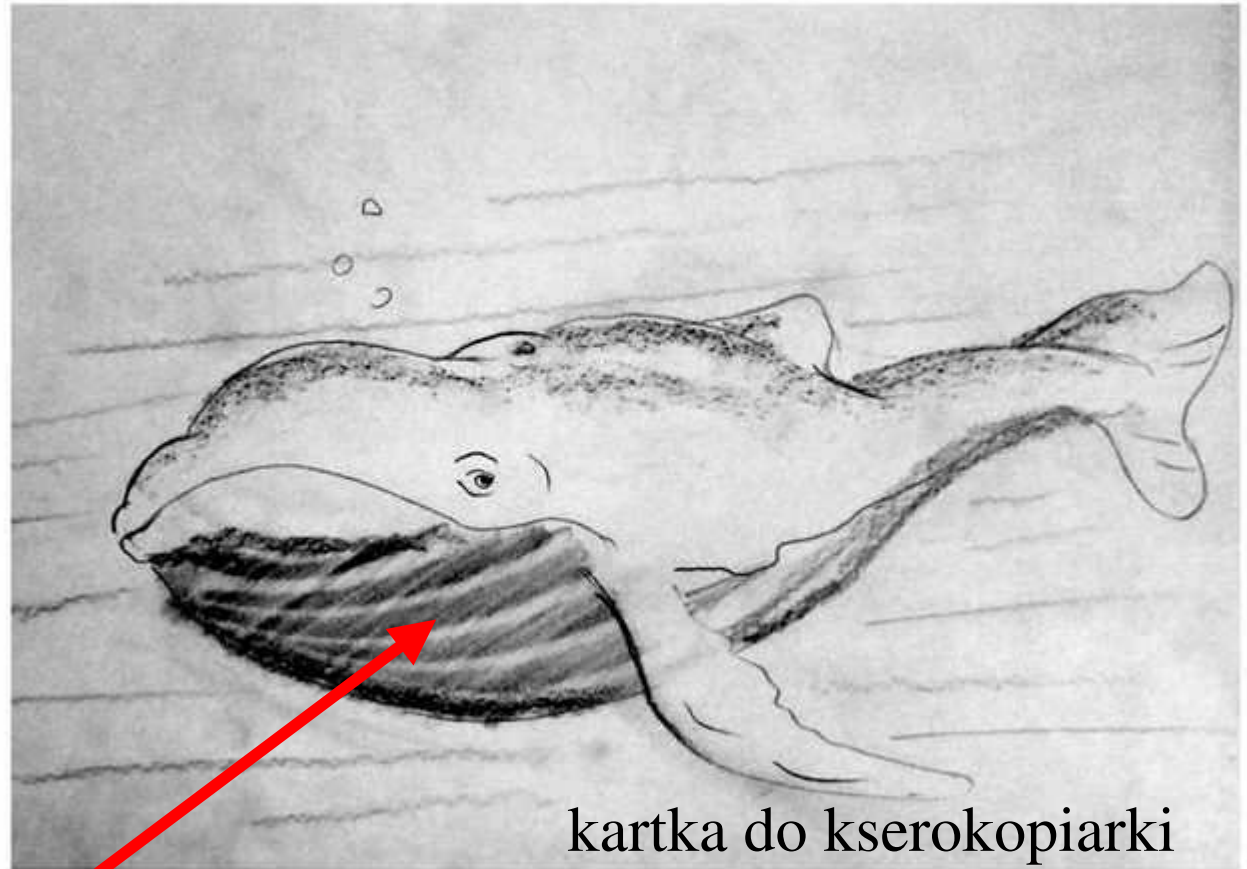


Siatka metalowa.

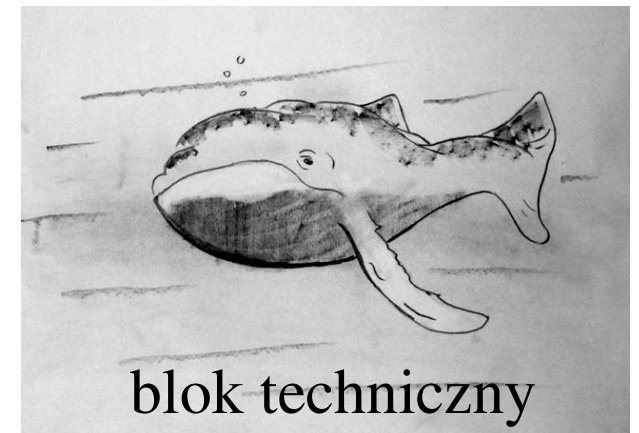
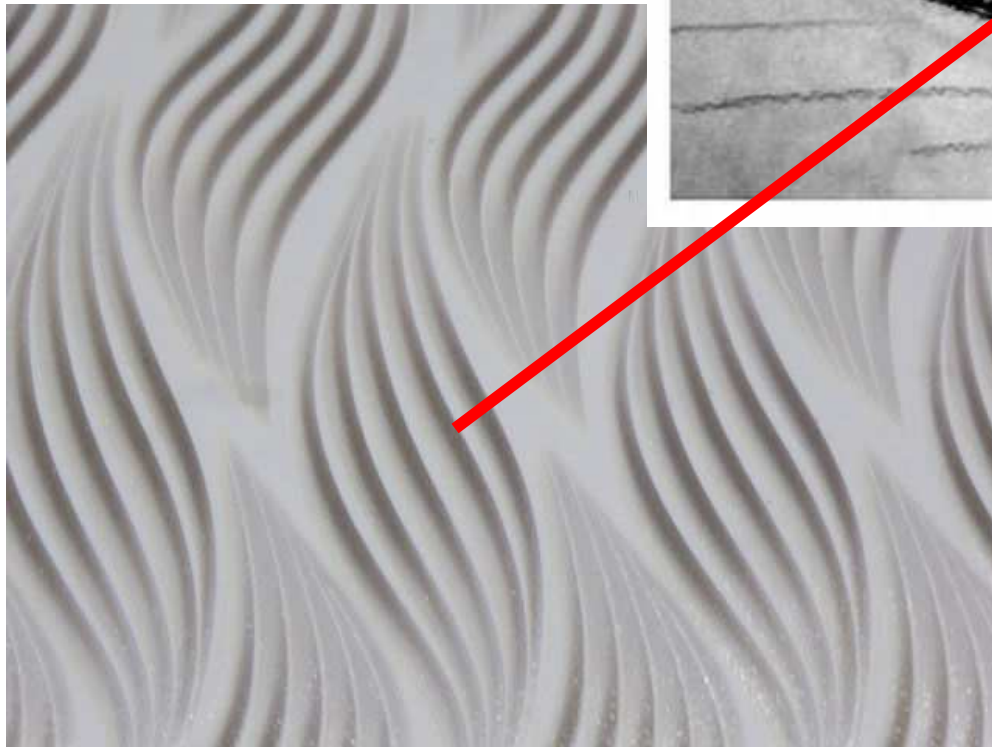


Papier ścierny.

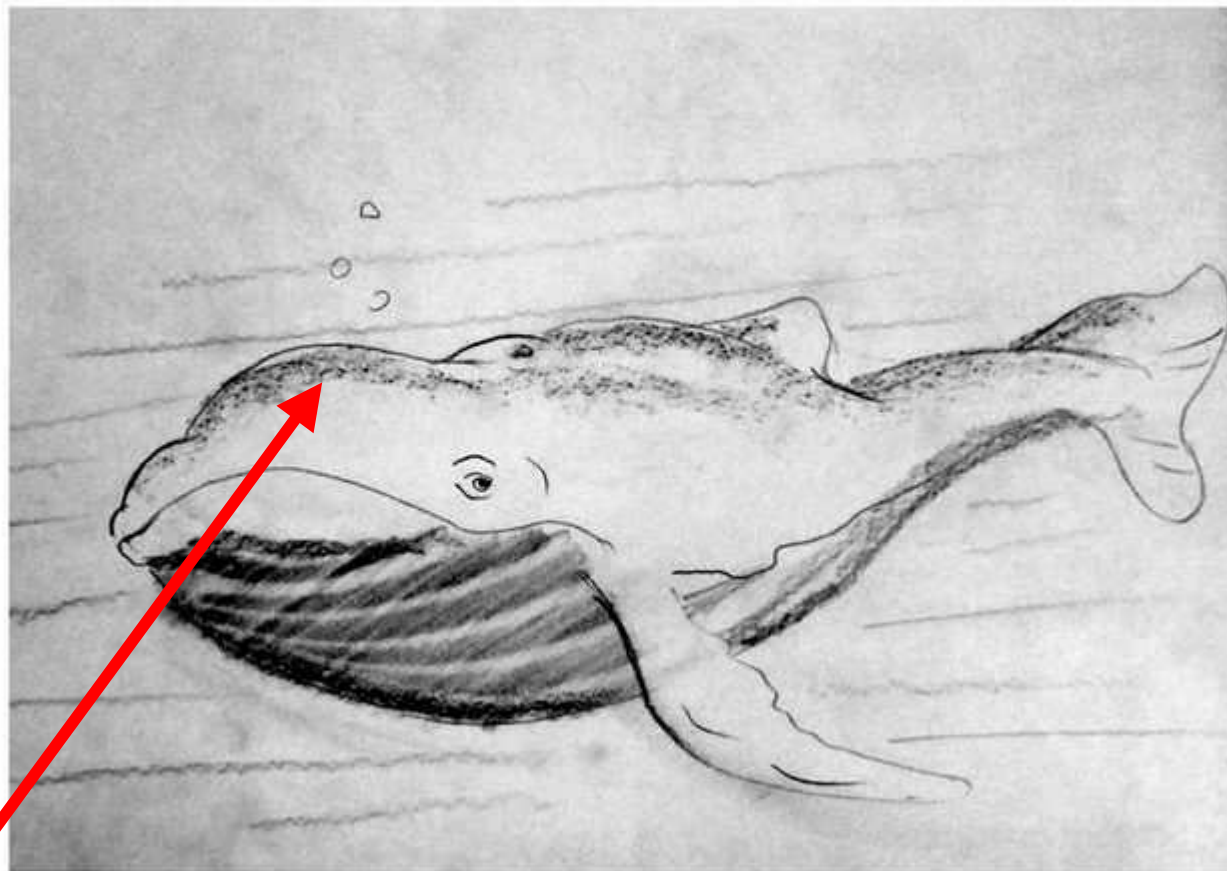
Tapeta.



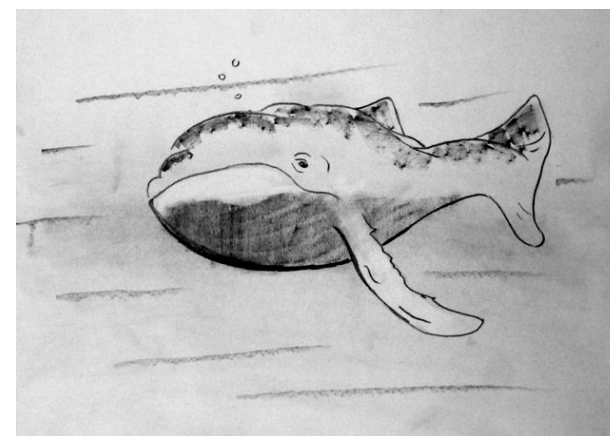
kartka do kserokopiarki



blok techniczny

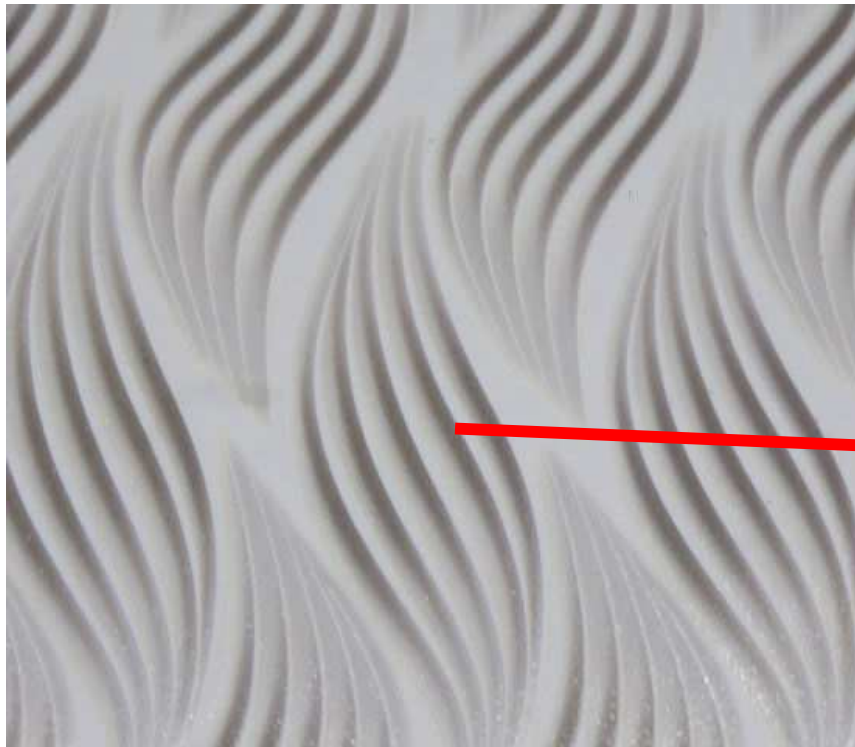
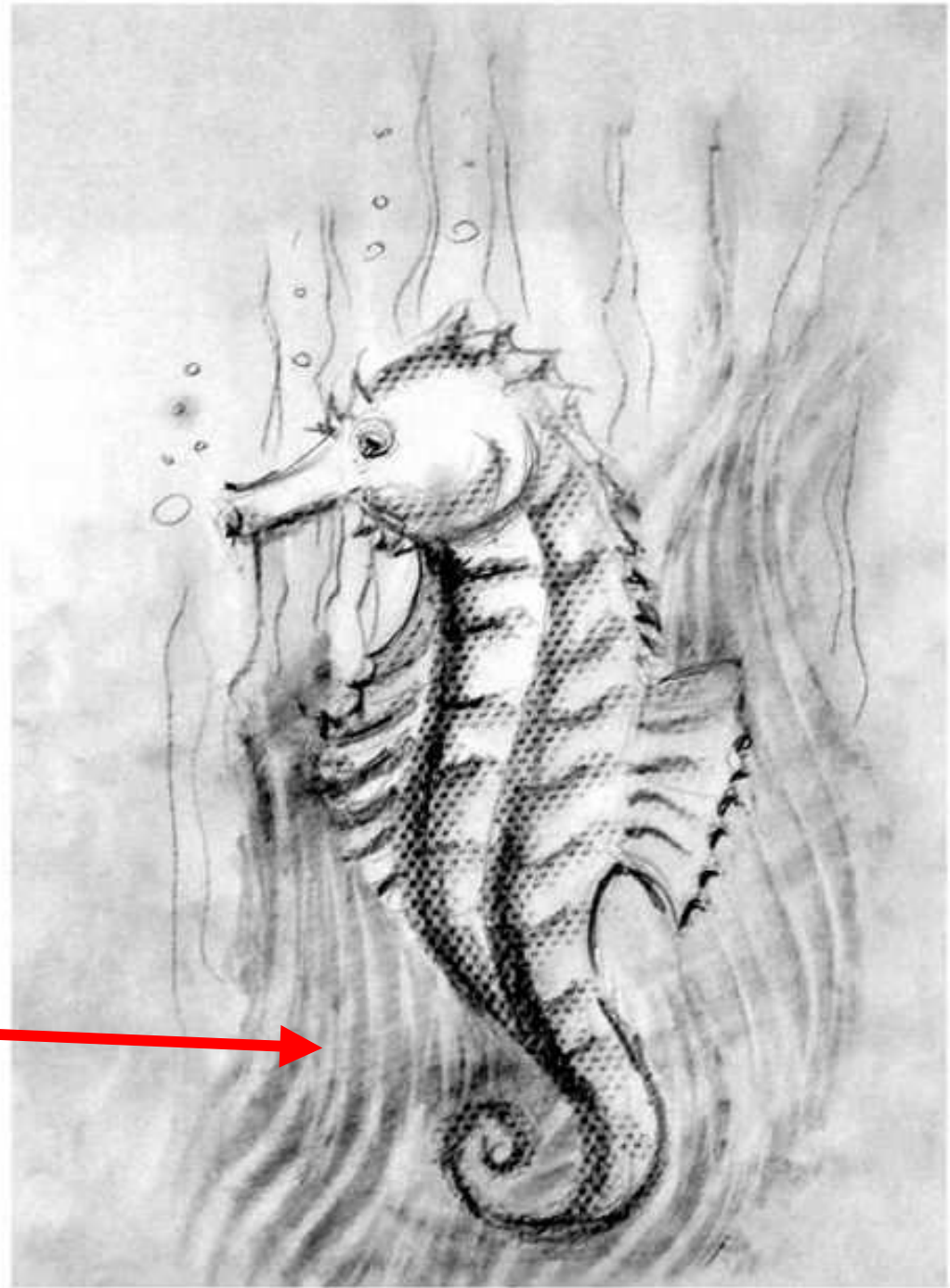


Papier ścierny.



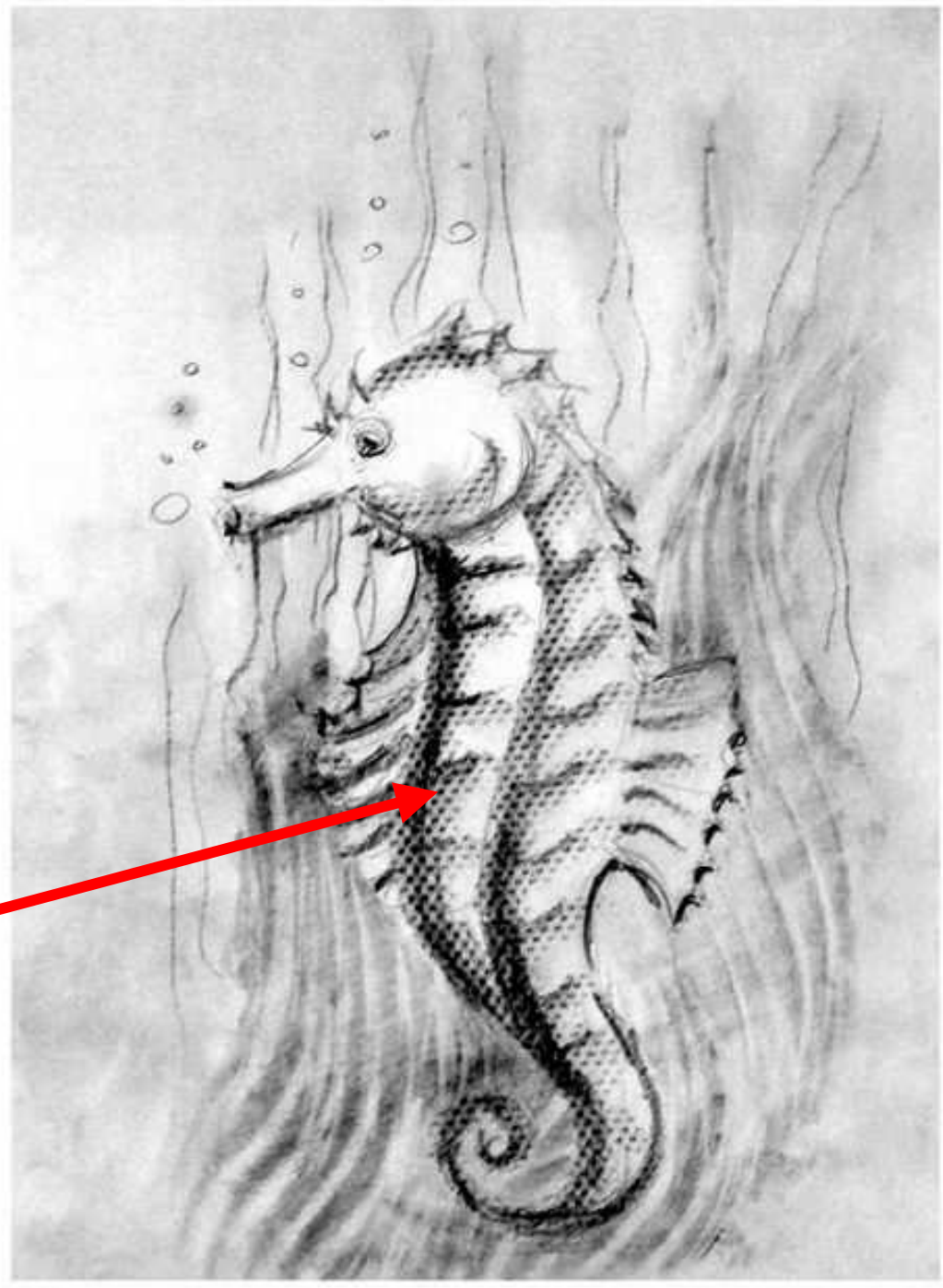


Tapeta/ cerata.



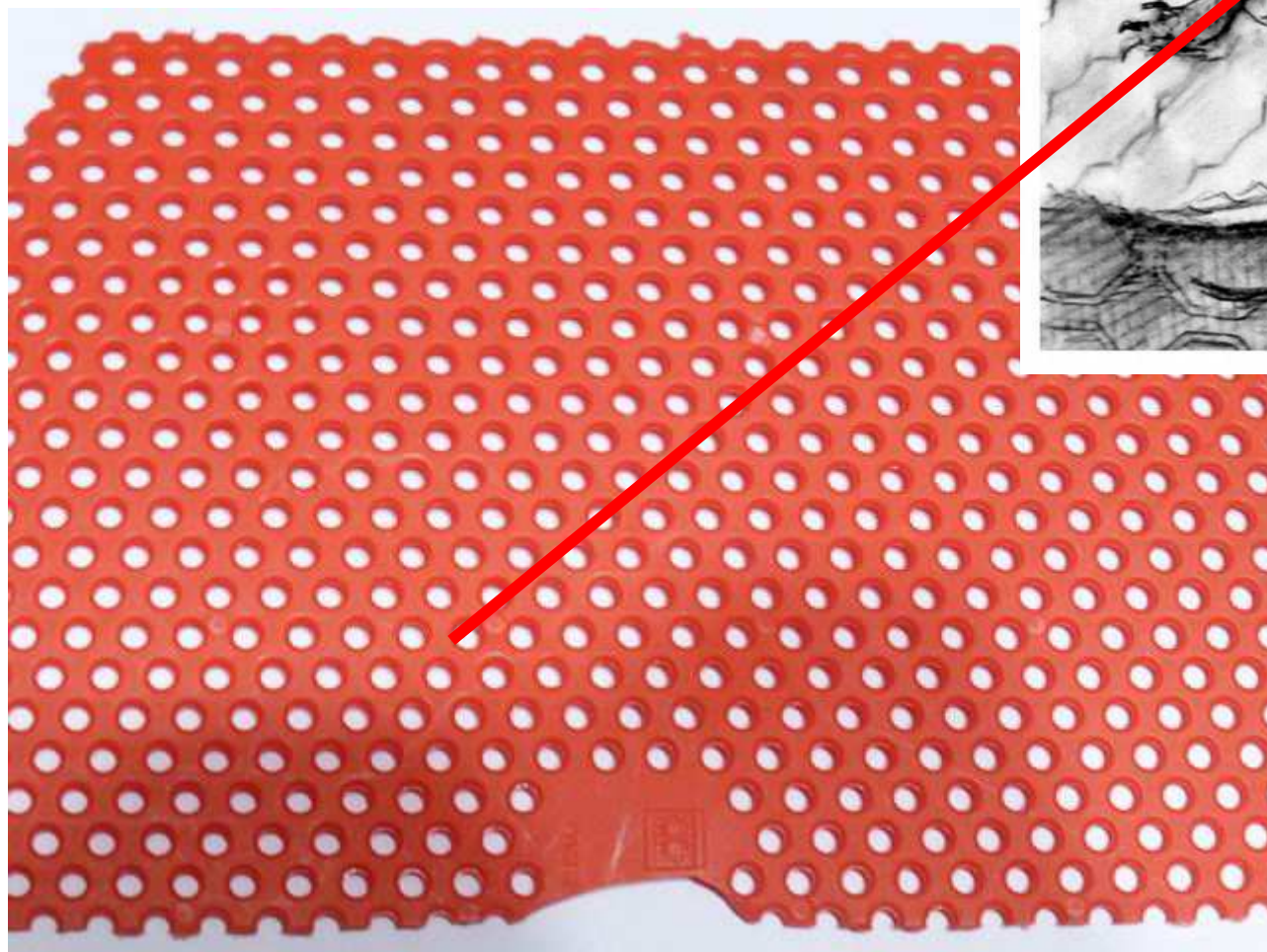
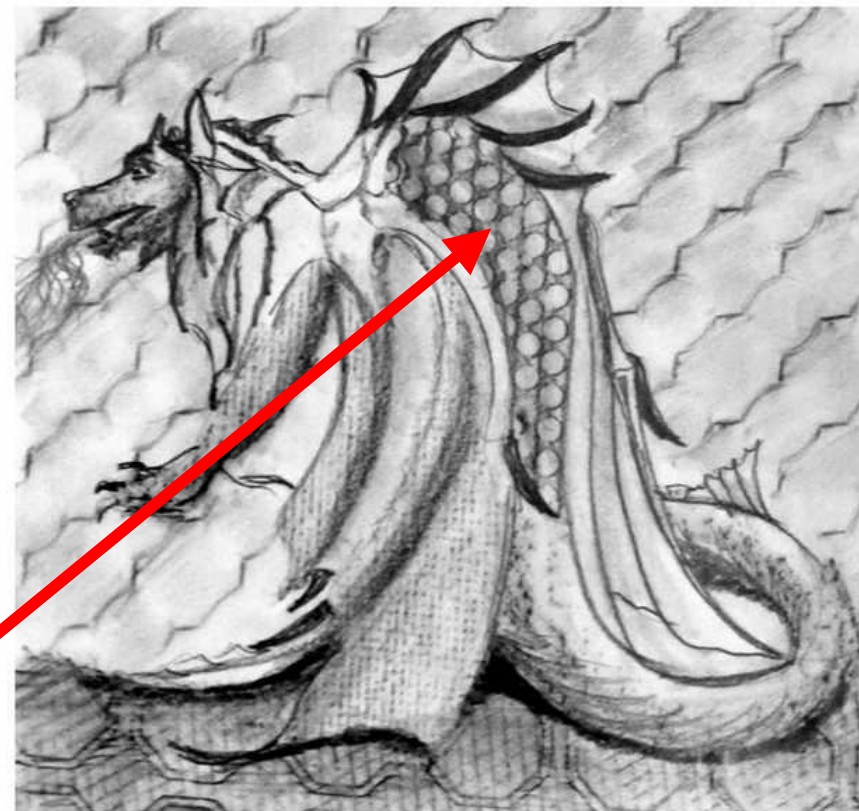


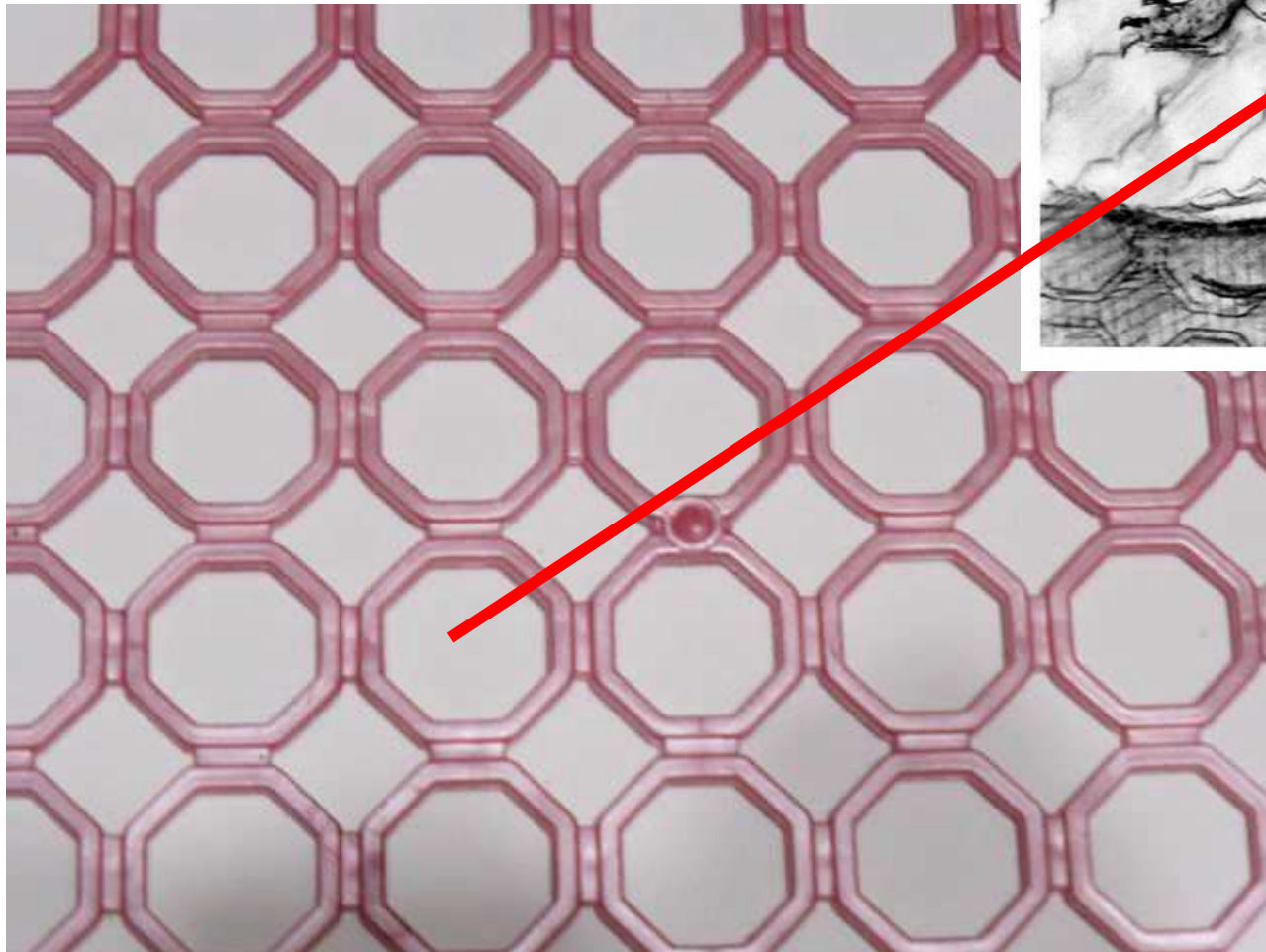
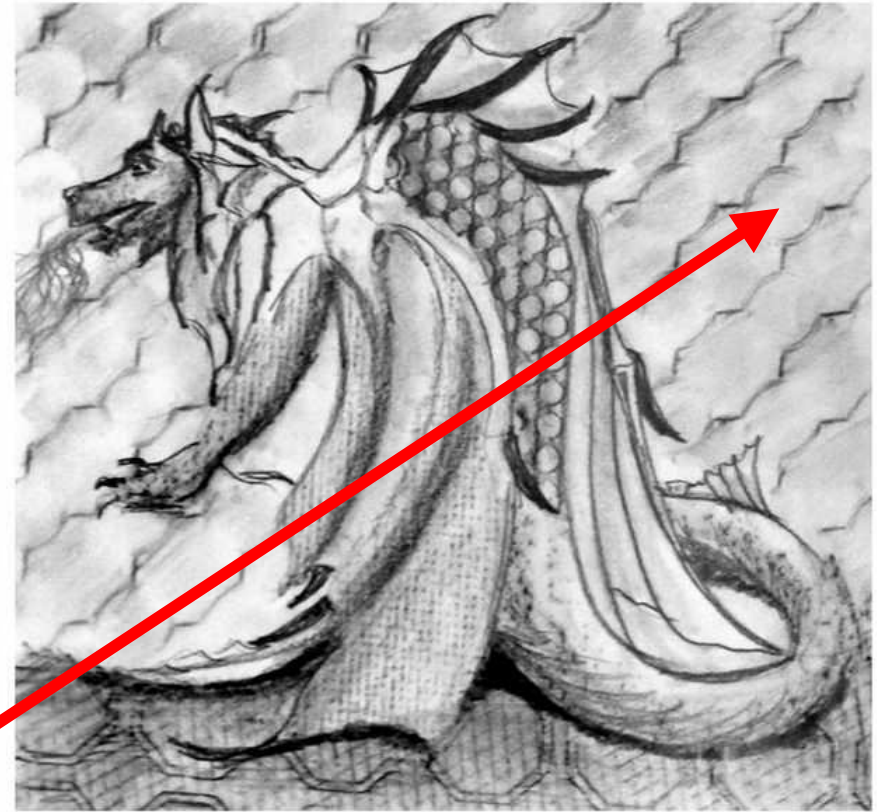
Papier ścierny.





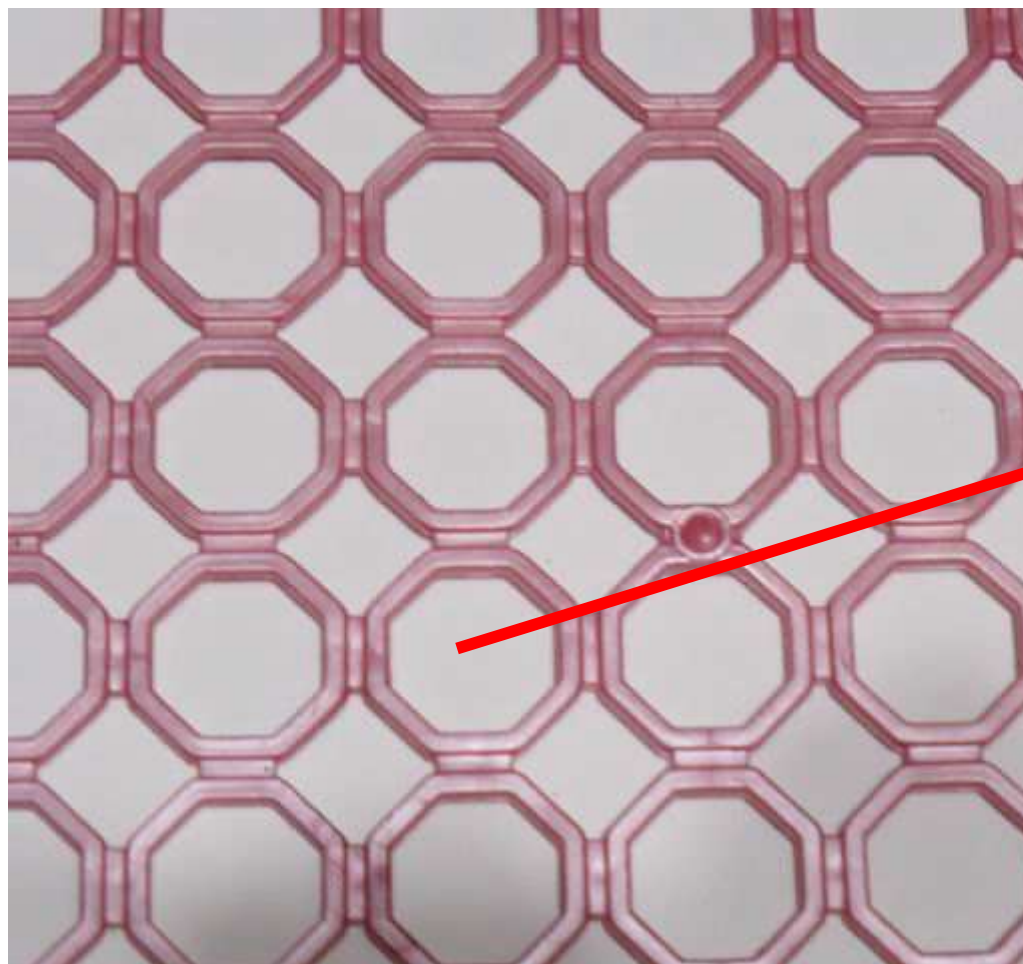
Fragment pojemnika z tworzywa.



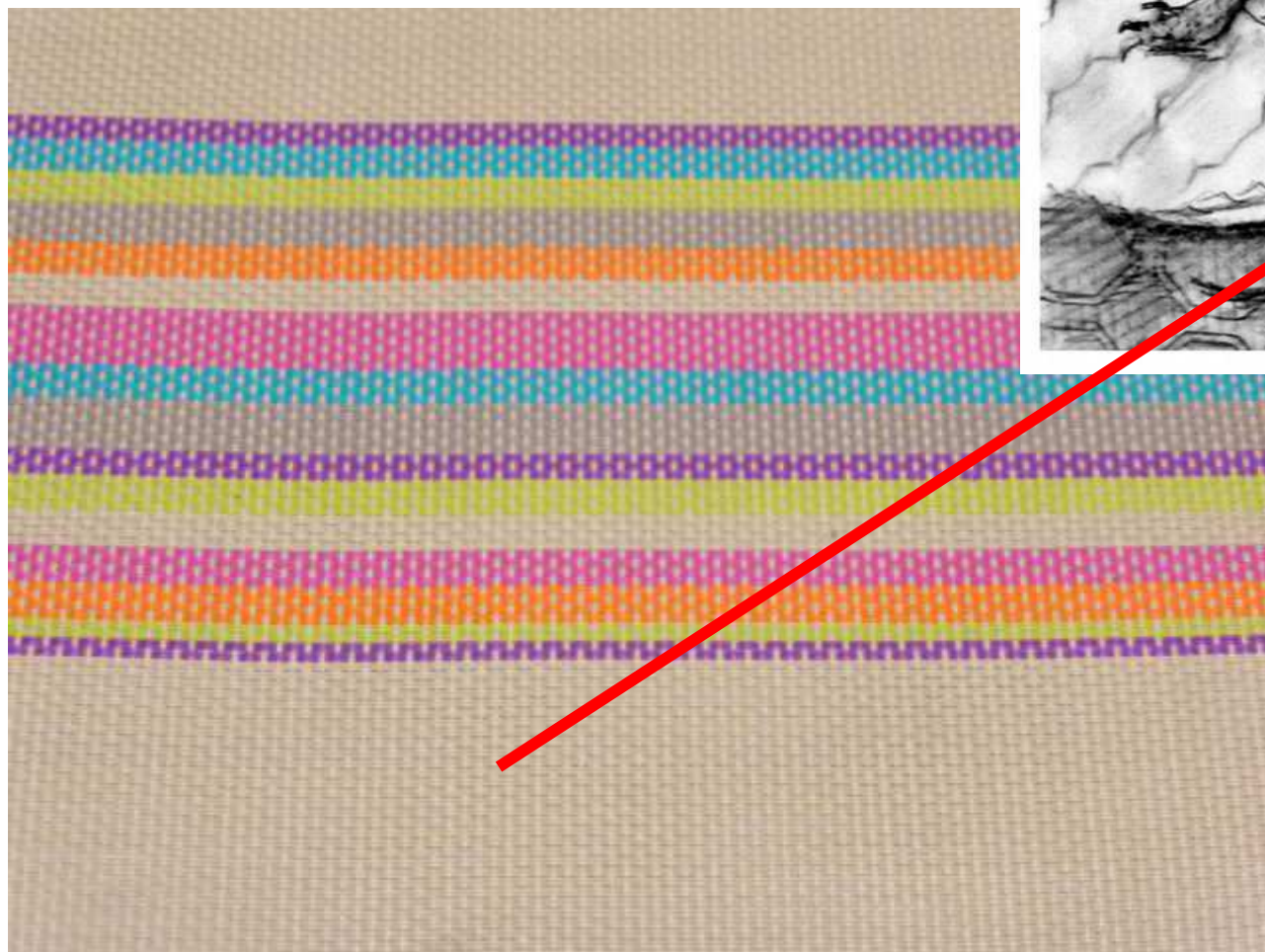
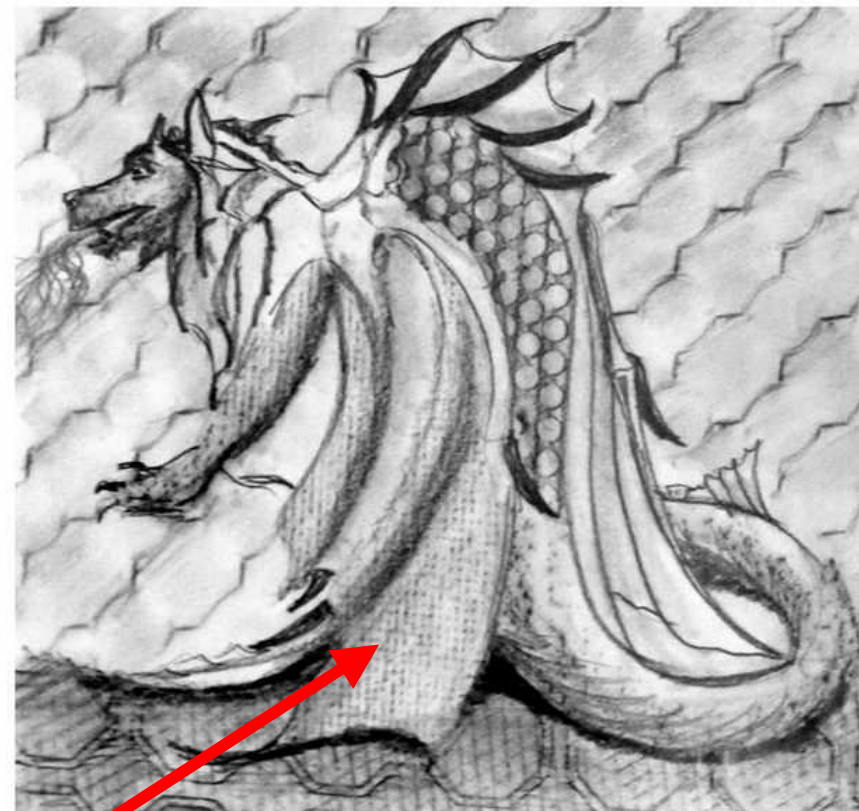


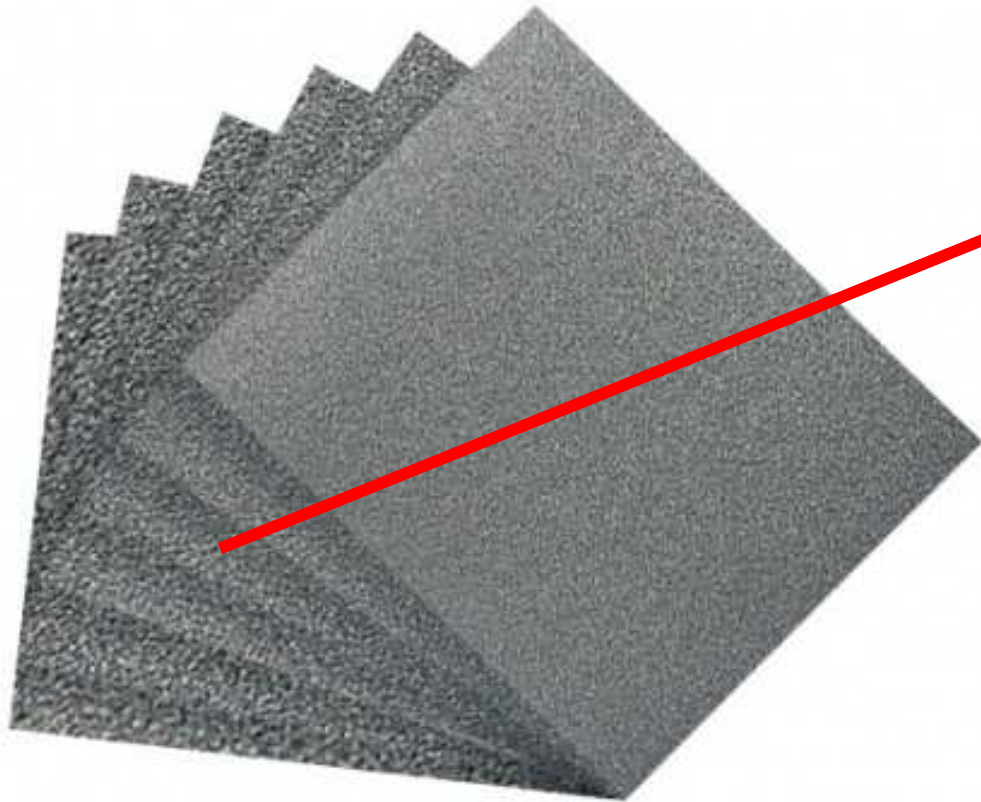
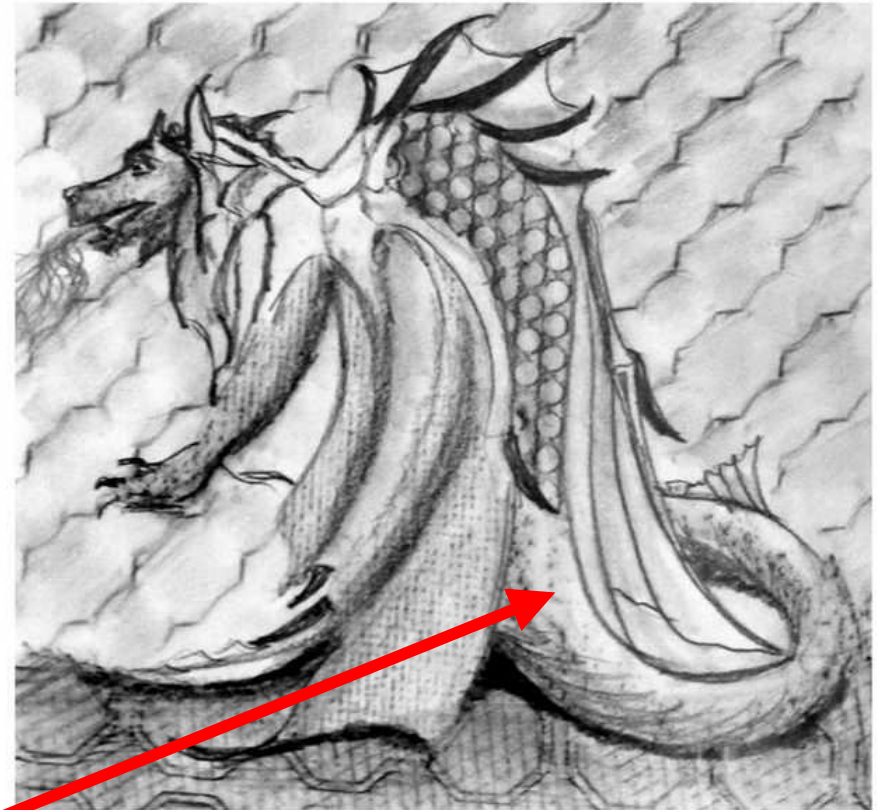
Wkład do zlewozmywaka.

*Wkład do zlewozmywaka
oraz siatka metalowa.*

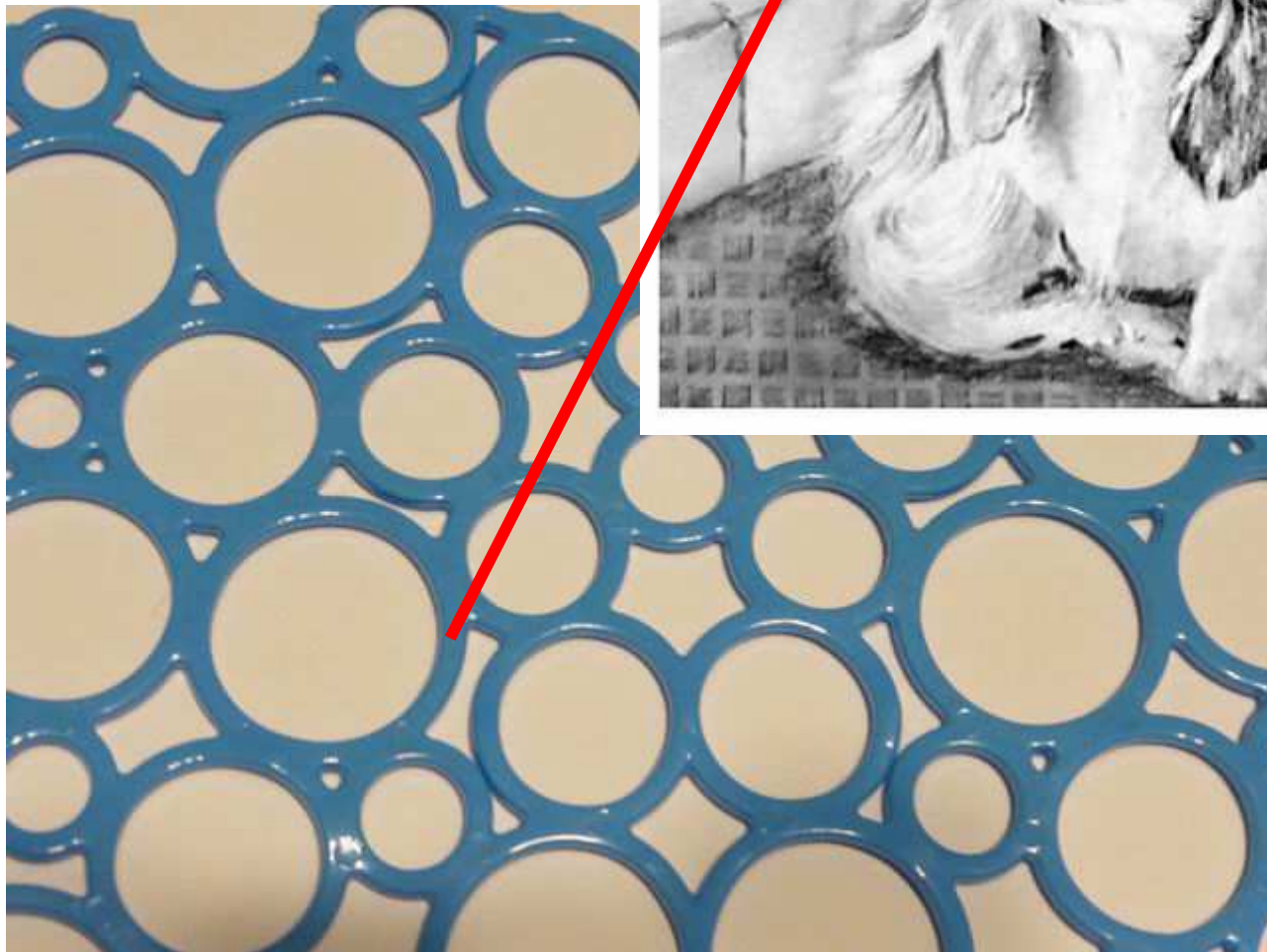


Tkanina – podkładka śniadaniowa.

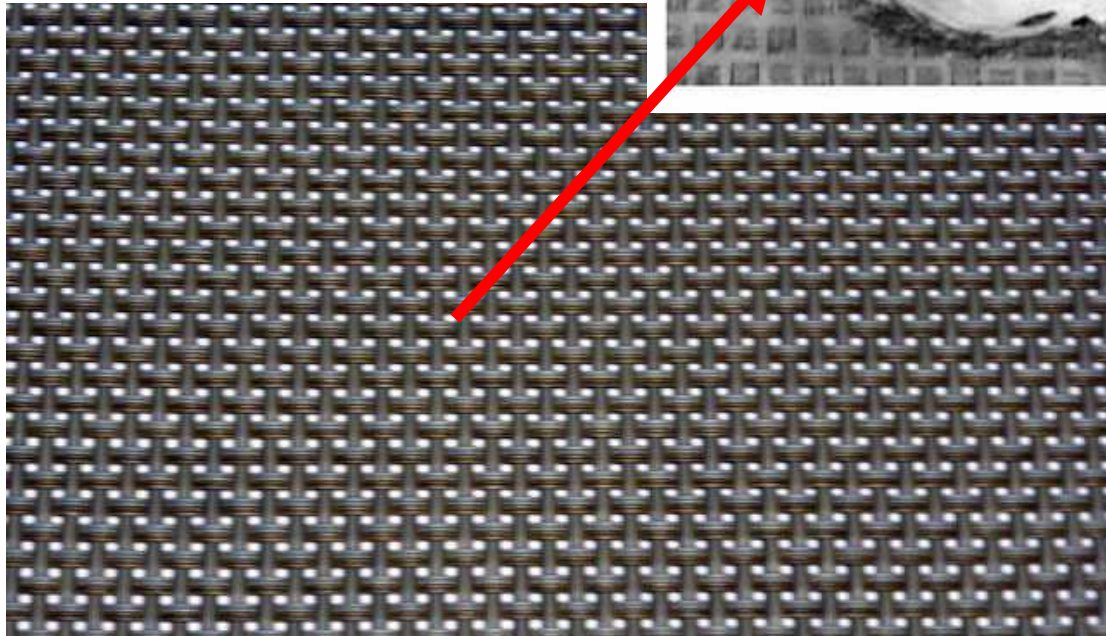




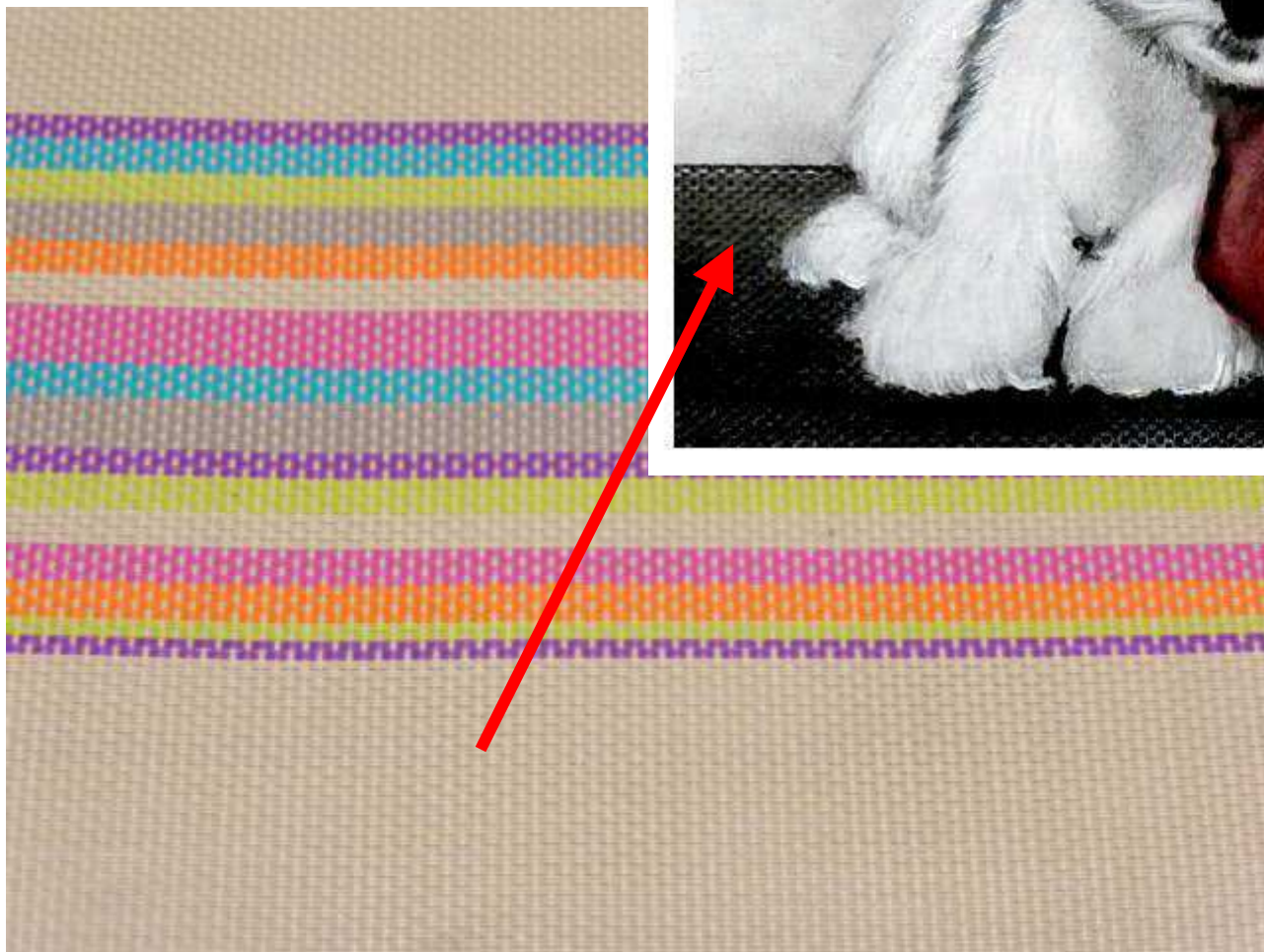
Papier ścierny.



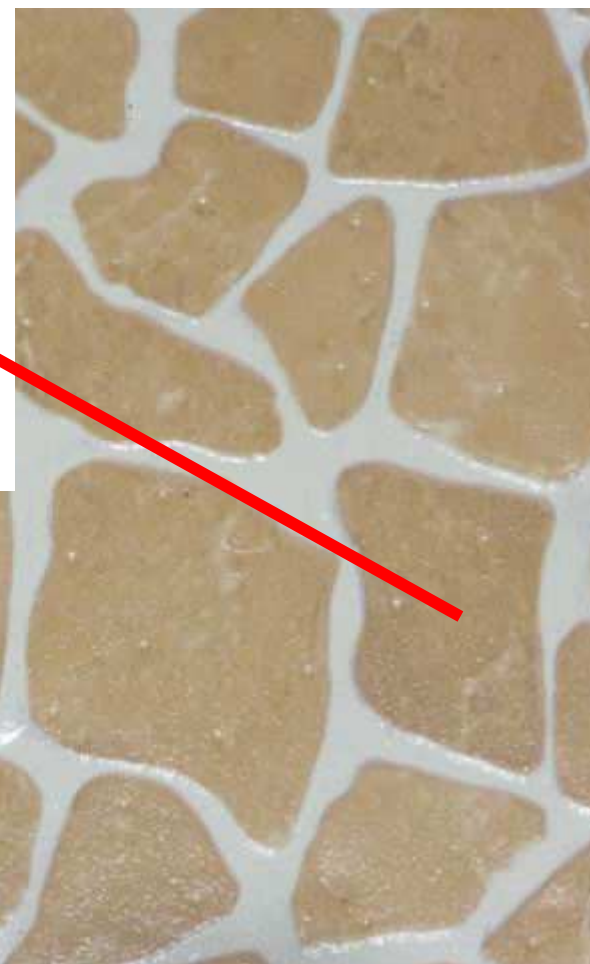
Wkład do zlewozmywaka.



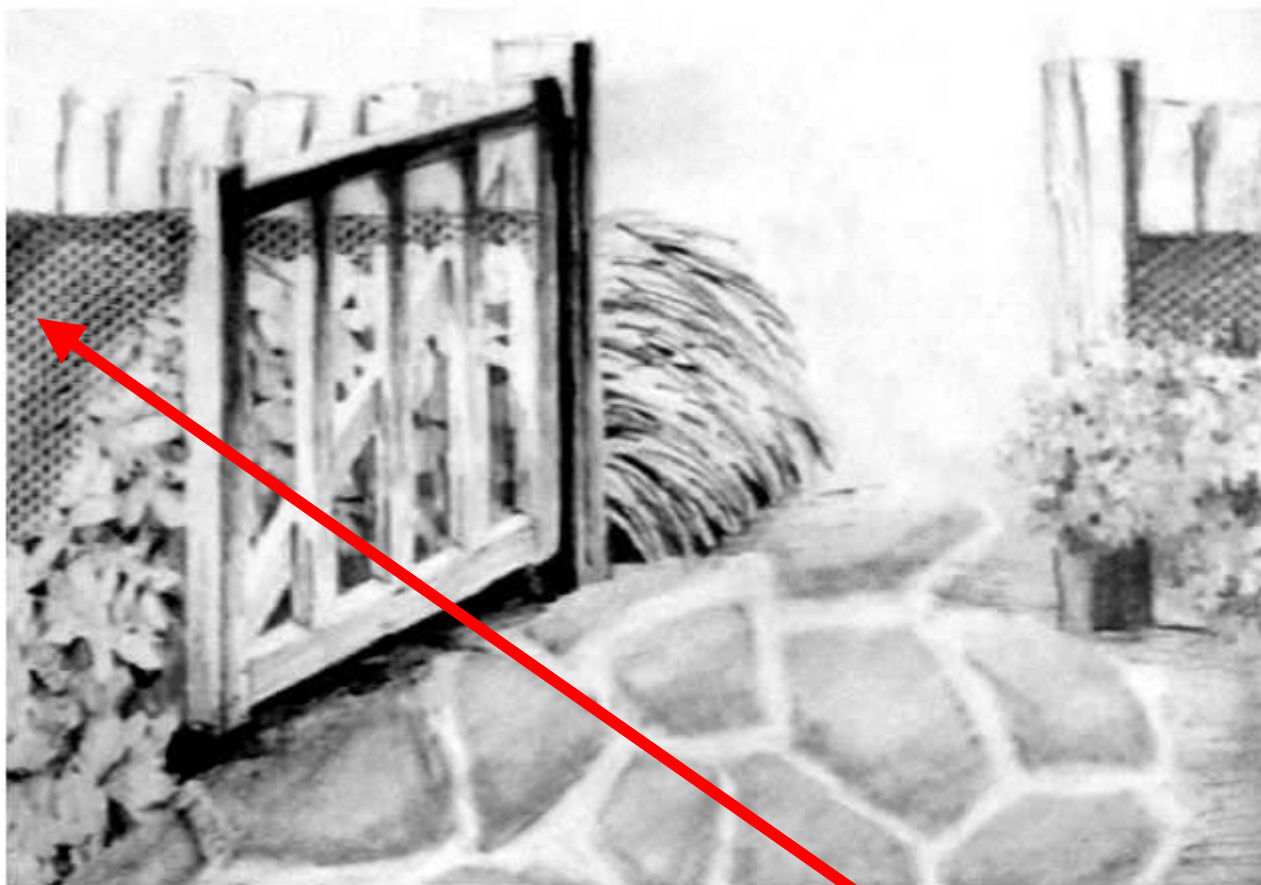
*Tkanina – podkładka
śniadaniowa.*



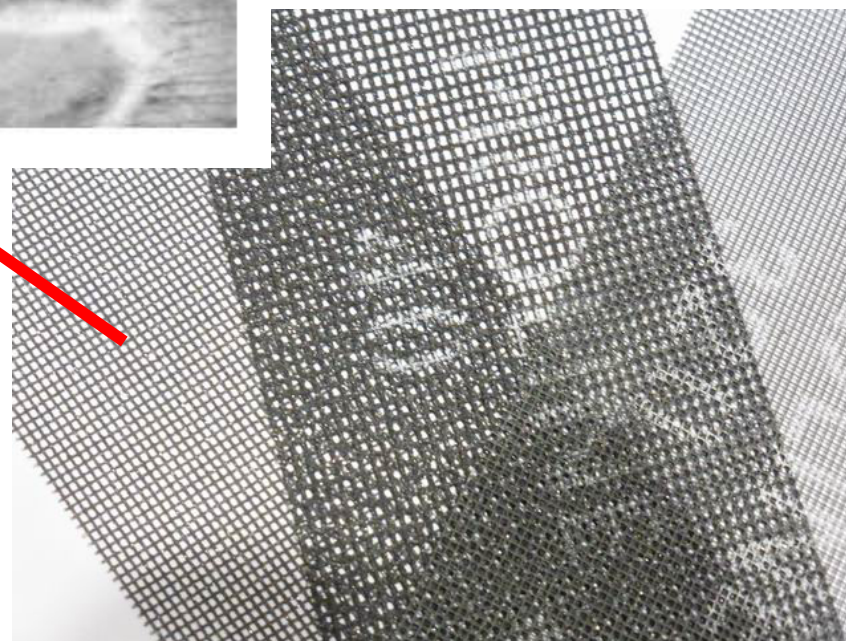
*Tkanina – podkładka
śniadaniowa.*

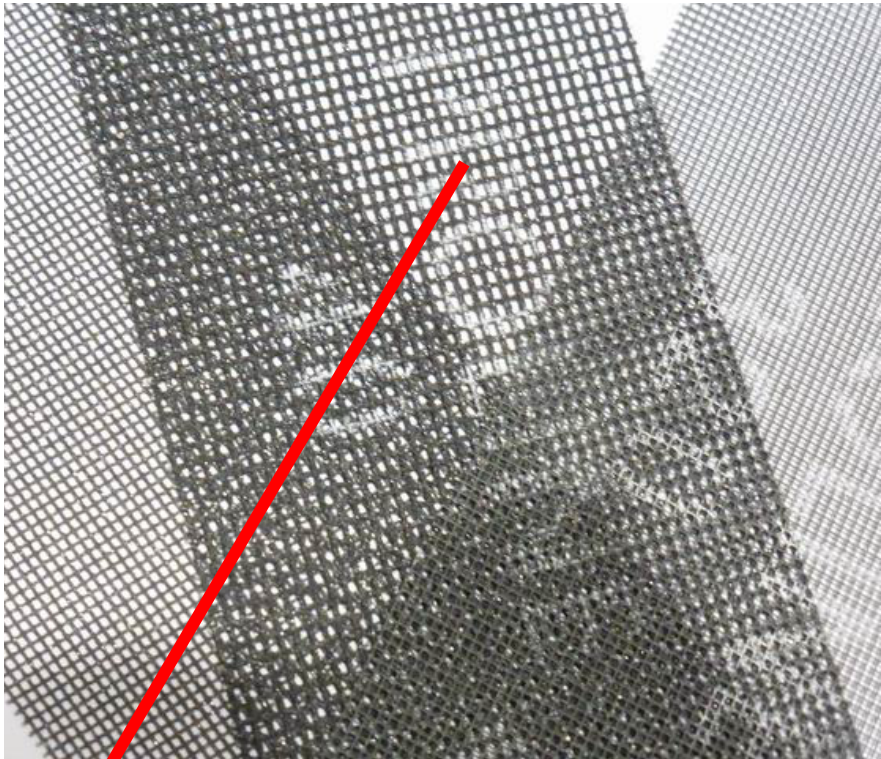
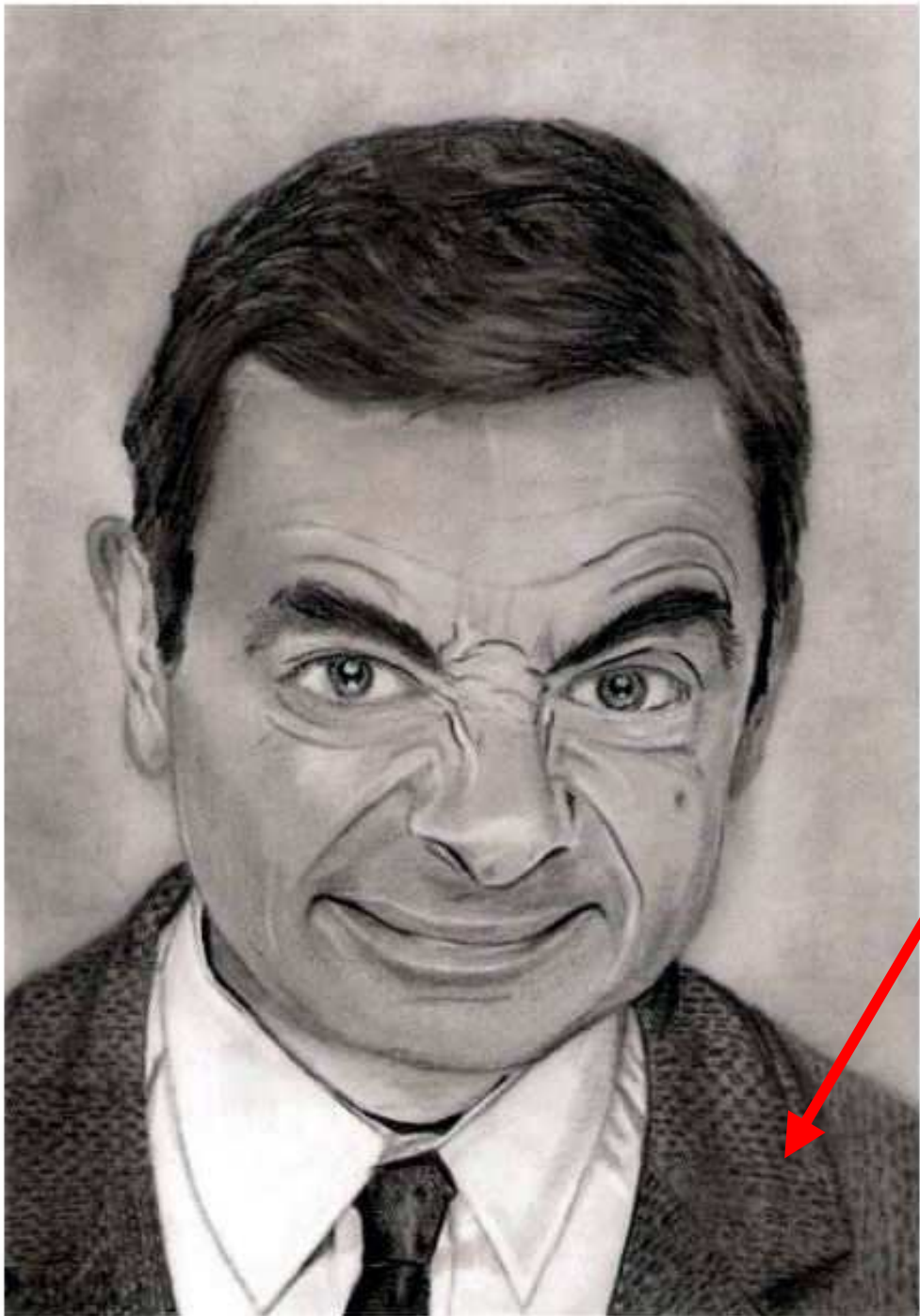


Tapeta.



Siatka metalowa.

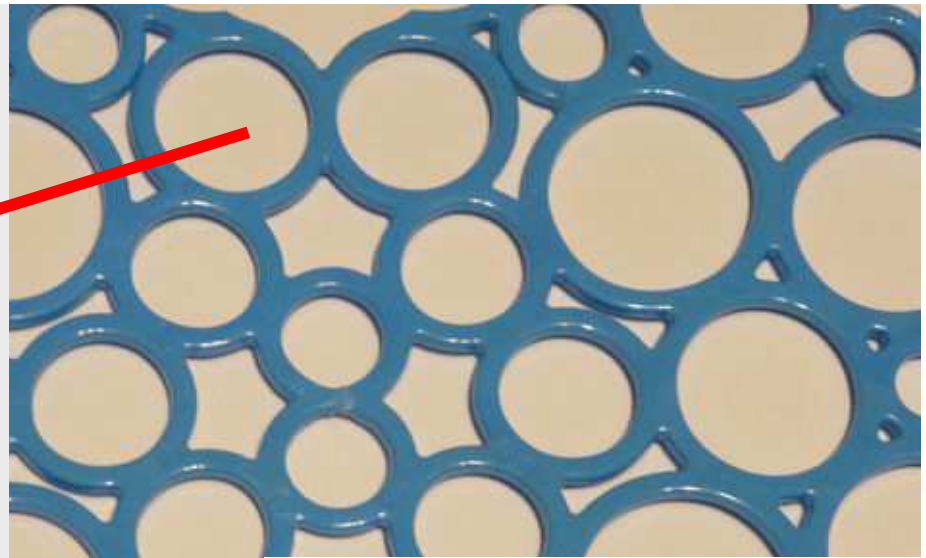




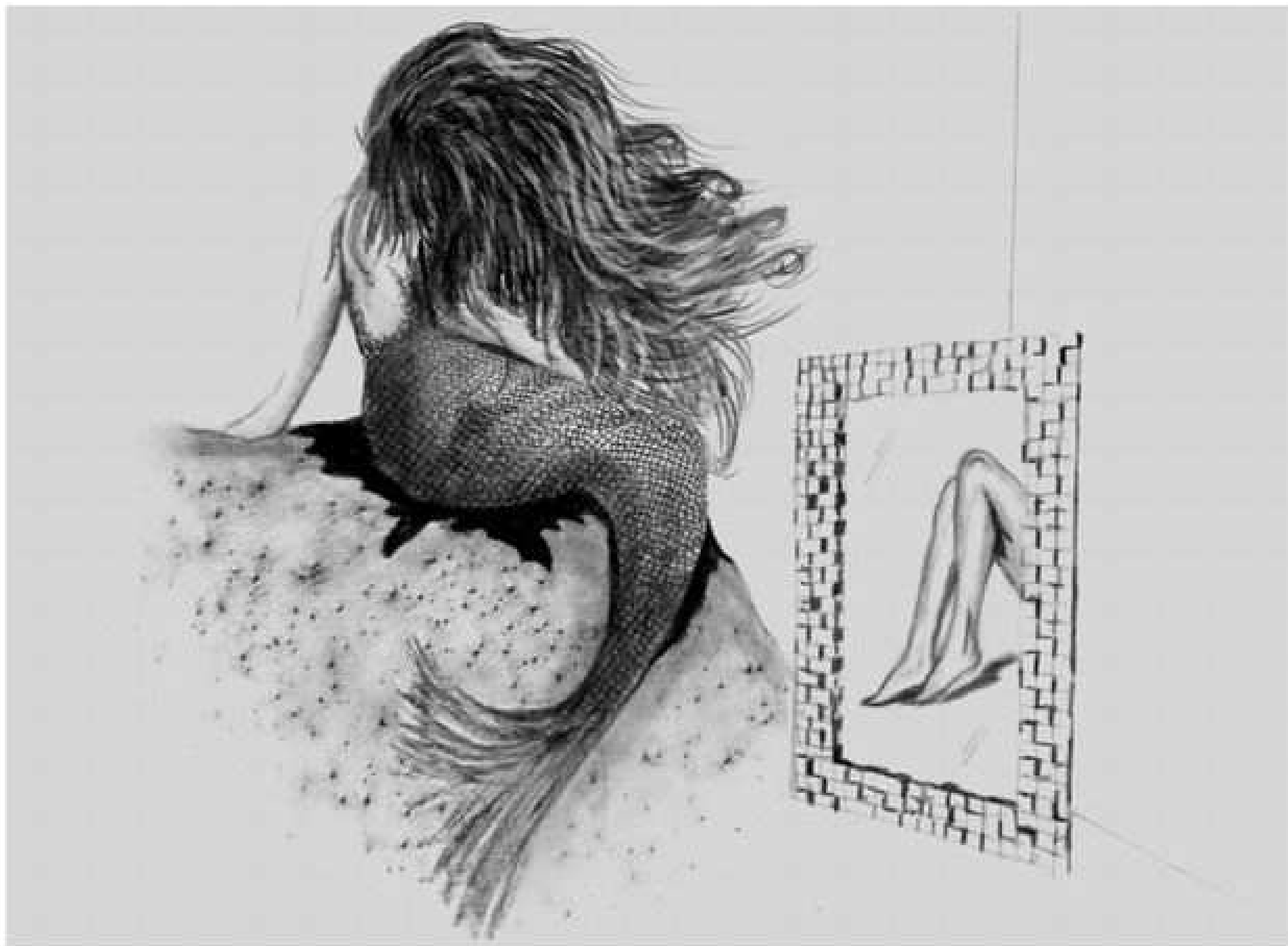
Siatka metalowa.

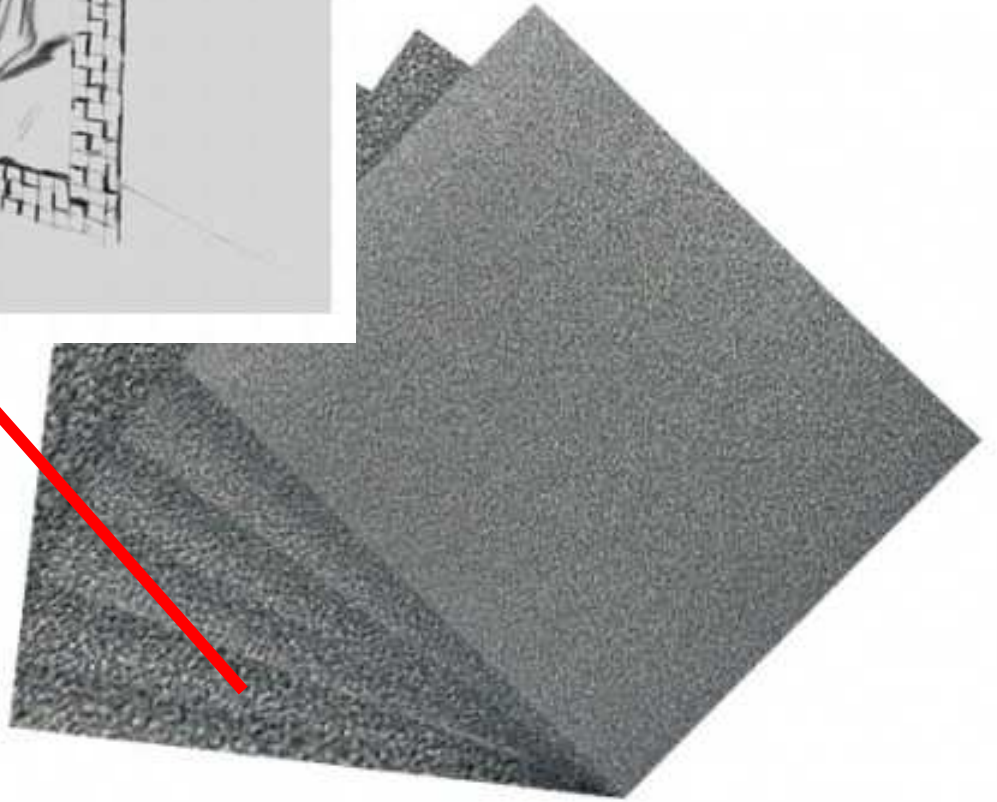
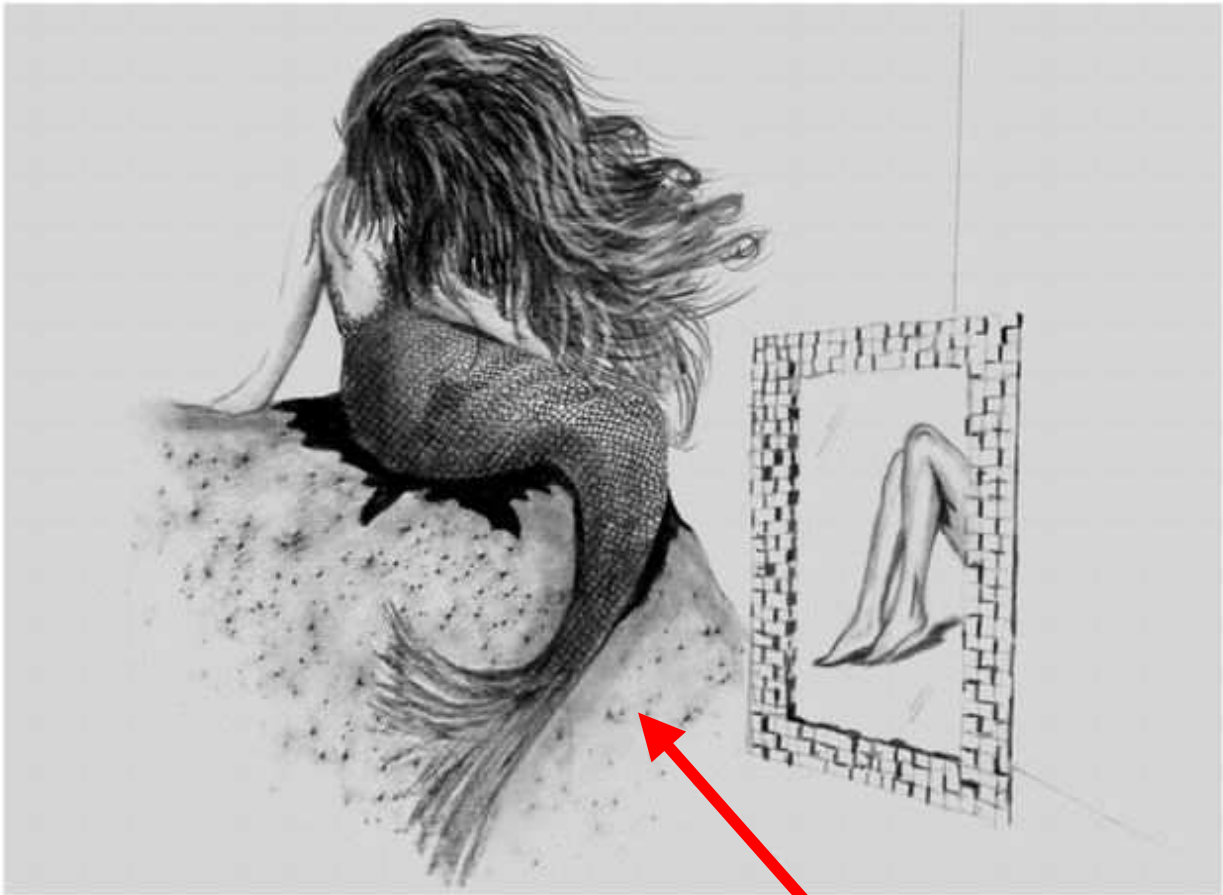


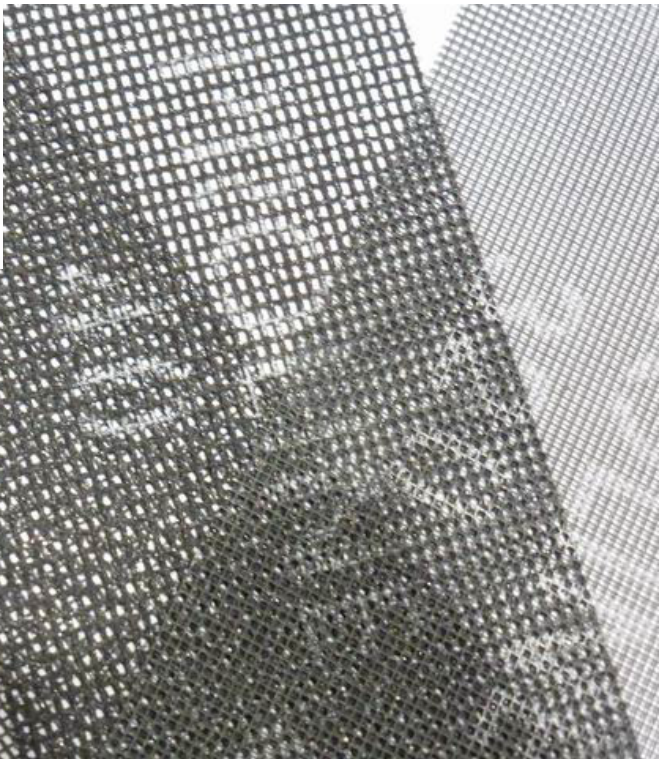
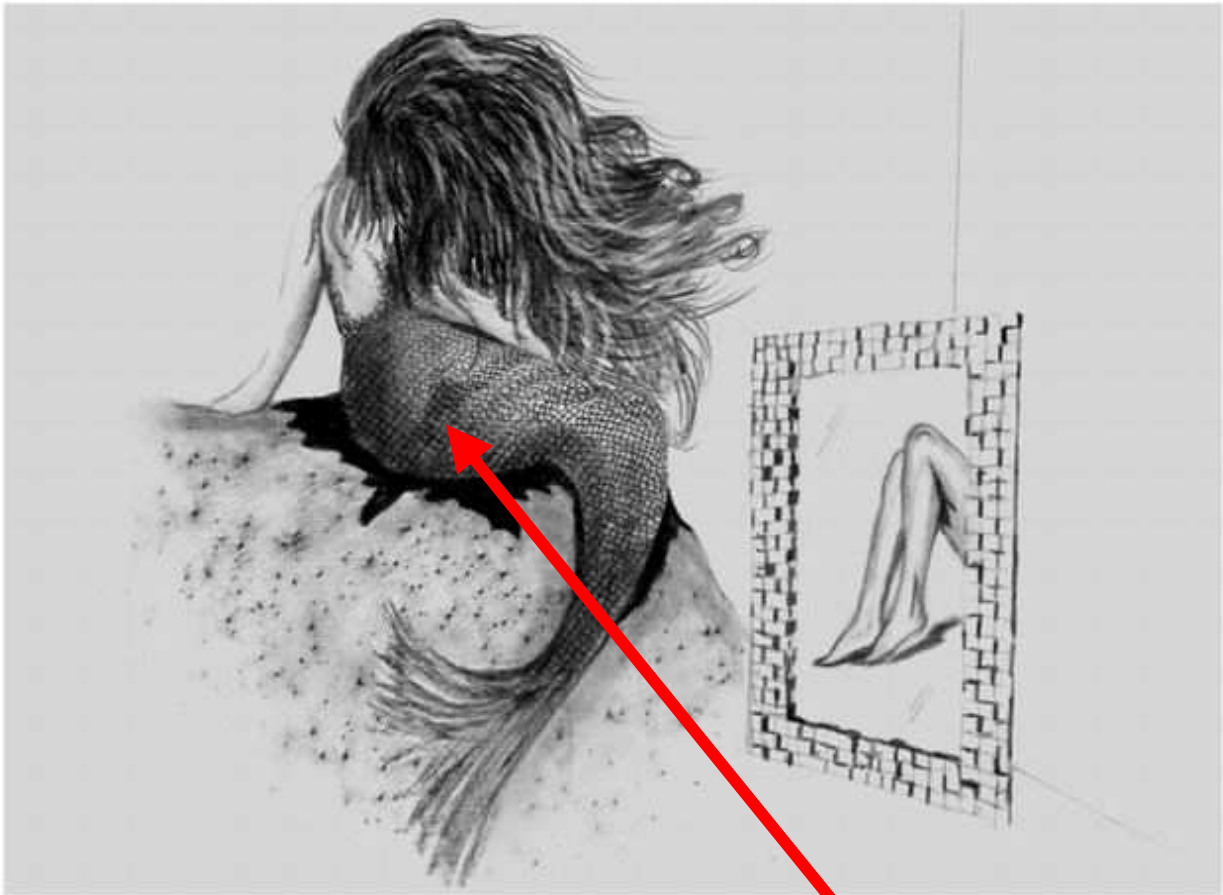
Papier ścierny.



*Wkład do zlewozmywaka
oraz papier ścierny.*

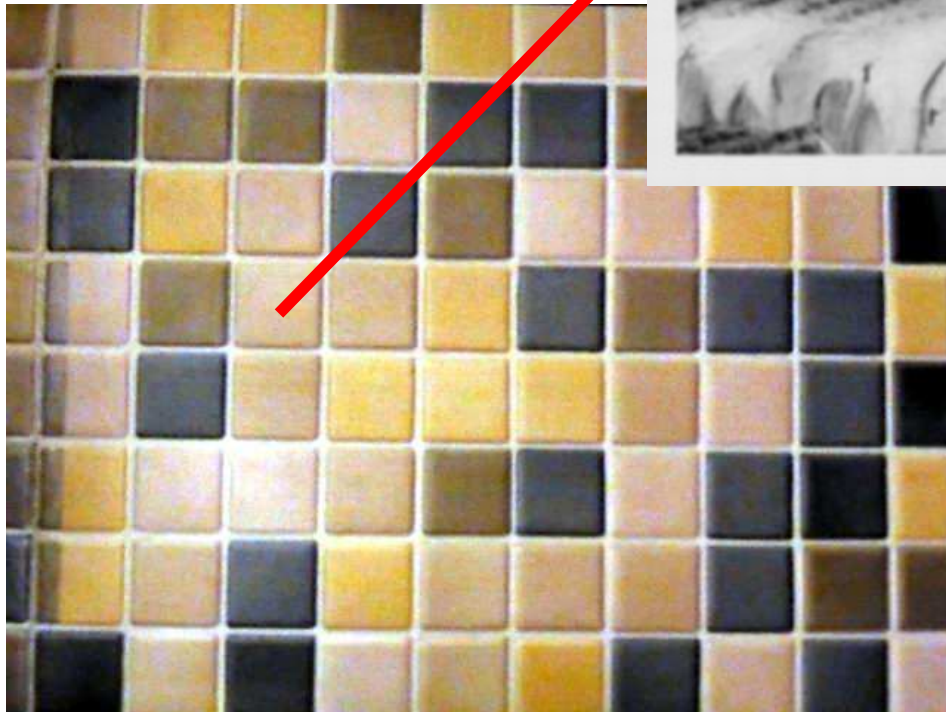




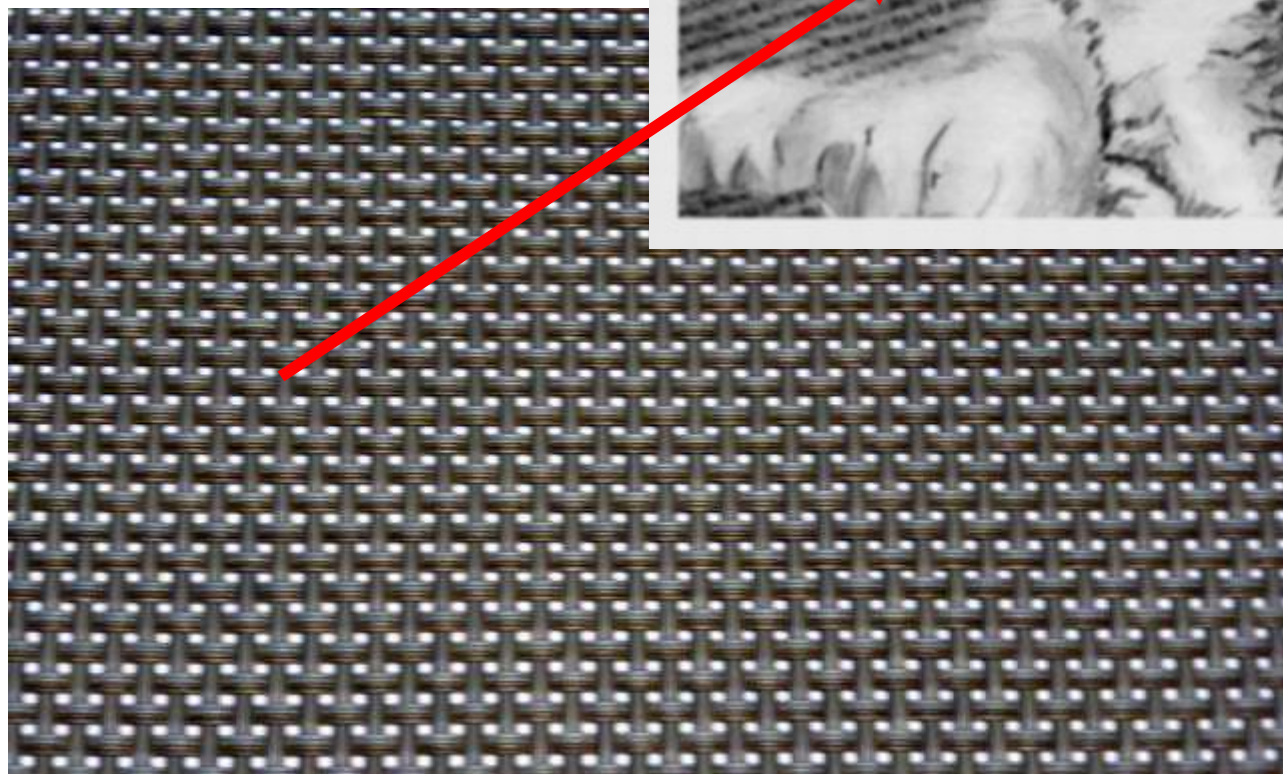


Siatka metalowa.





Tapeta.



*Tkanina – podkładka
śniadaniowa.*