



Quick Setup

Language English (English) ▾

Shortcuts Blender 27X ▾

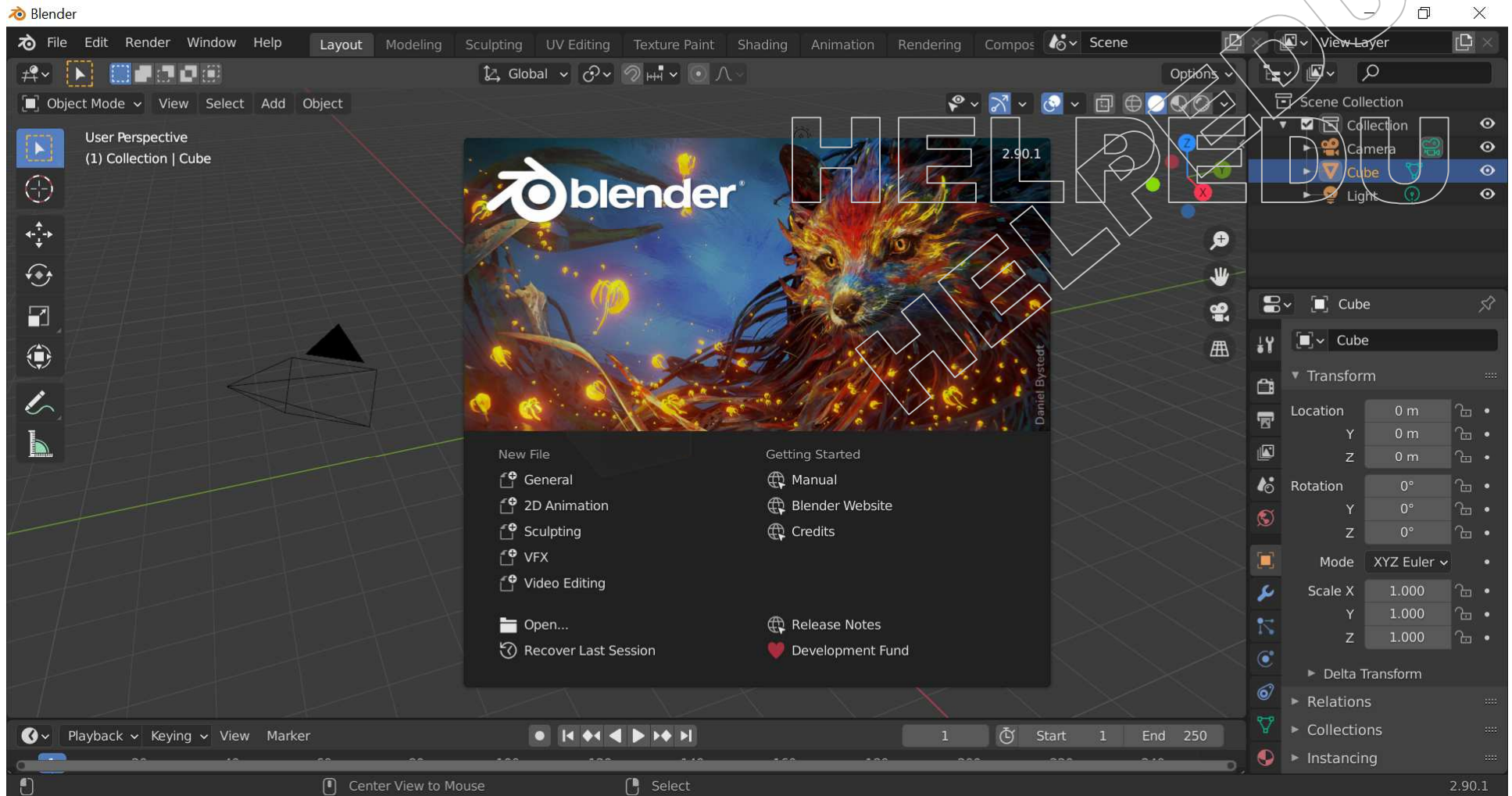
Select With Left Right

Theme Blender Dark ▾

Load 2.83 Settings

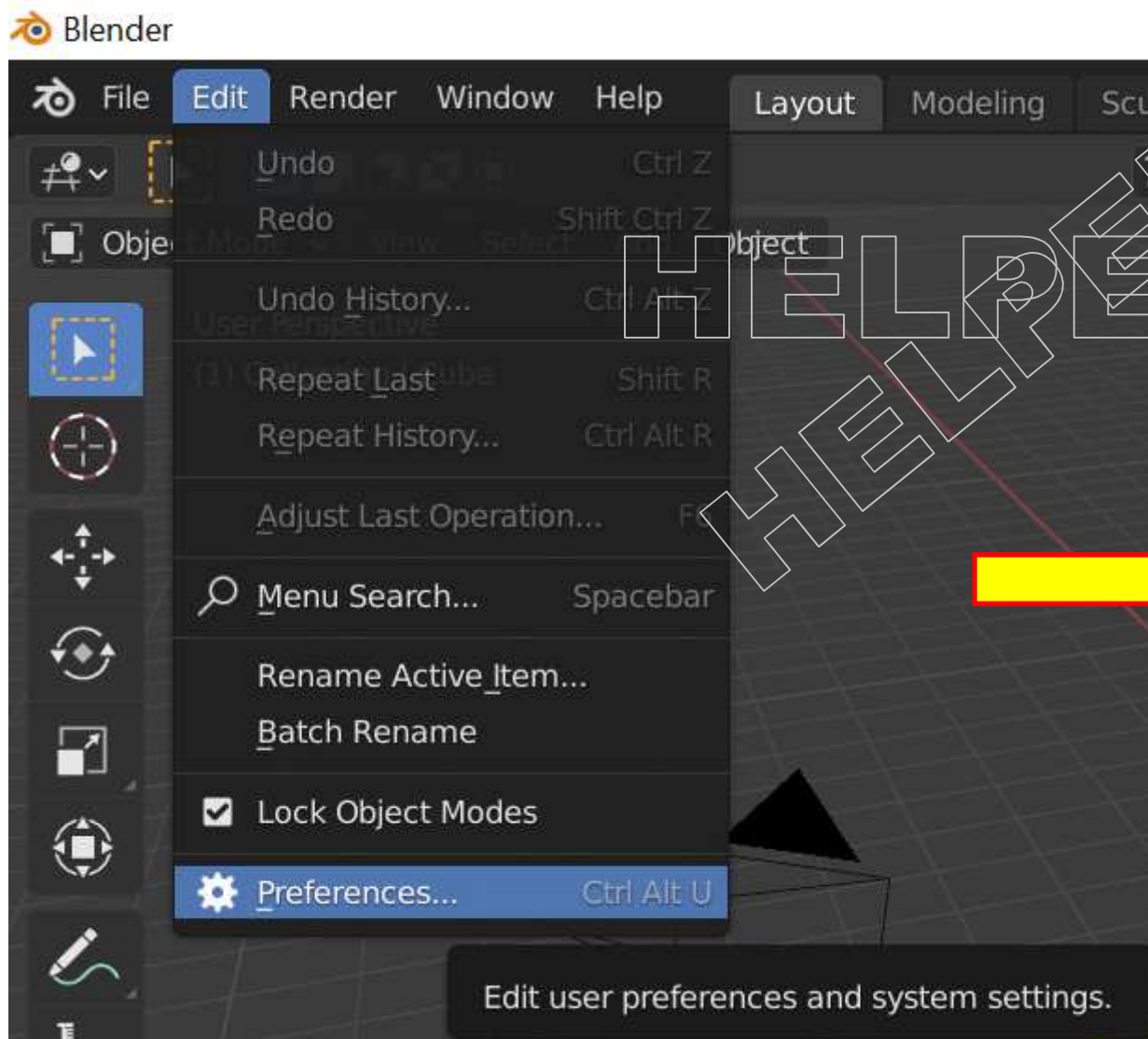
Save New Settings

**Ważne
ustawienia
programu przy
starcie.**

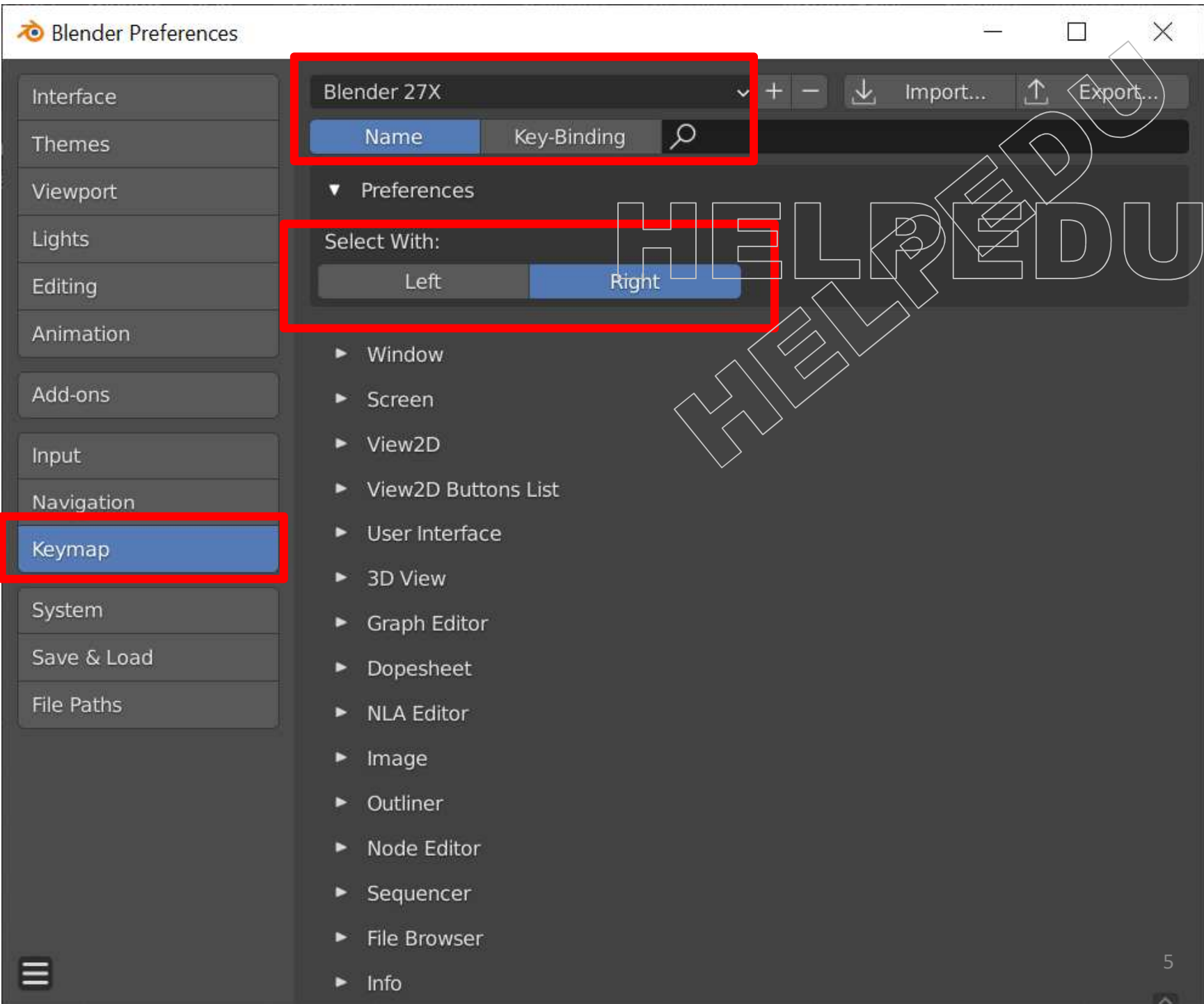


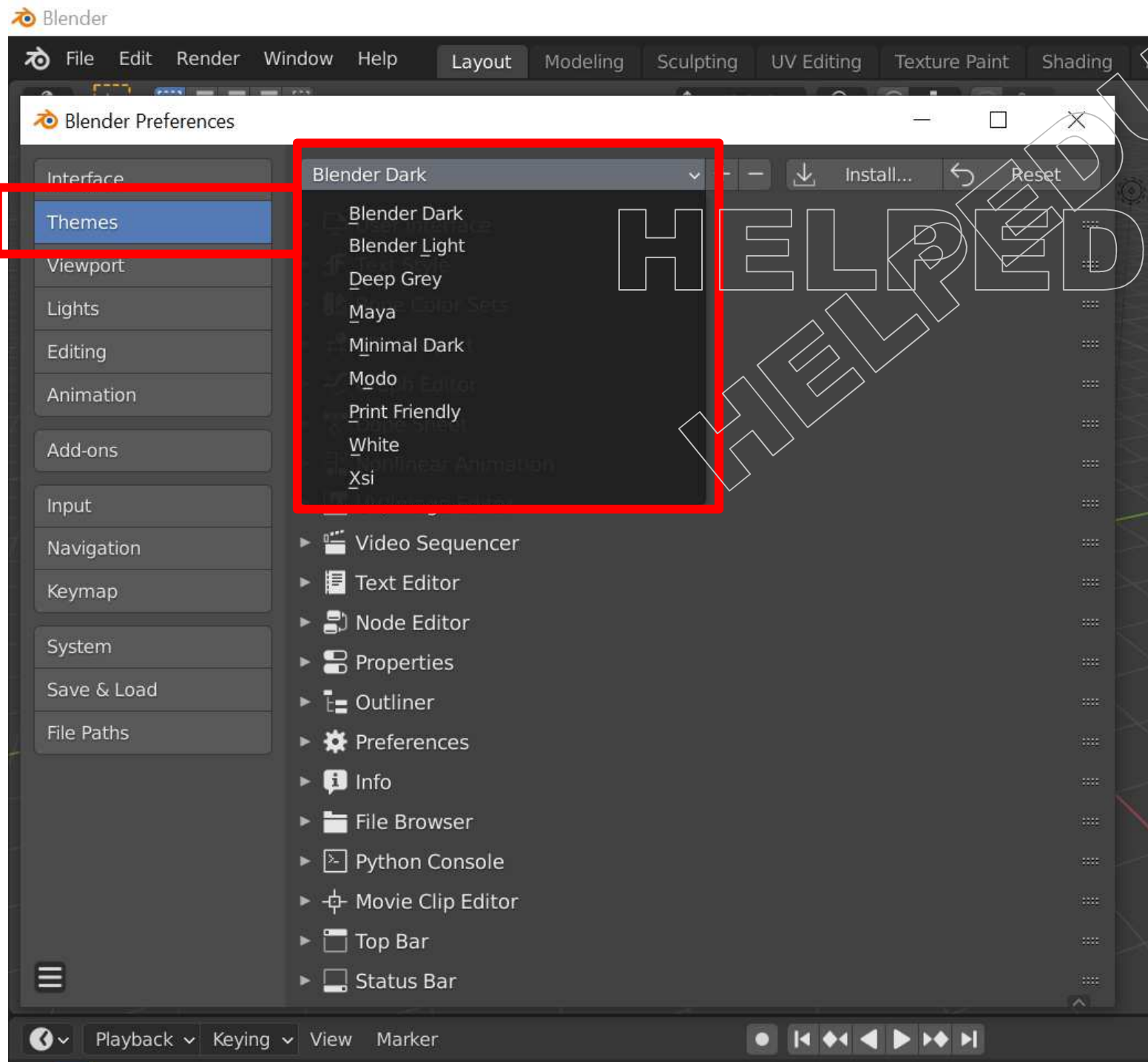
POPRAWKI

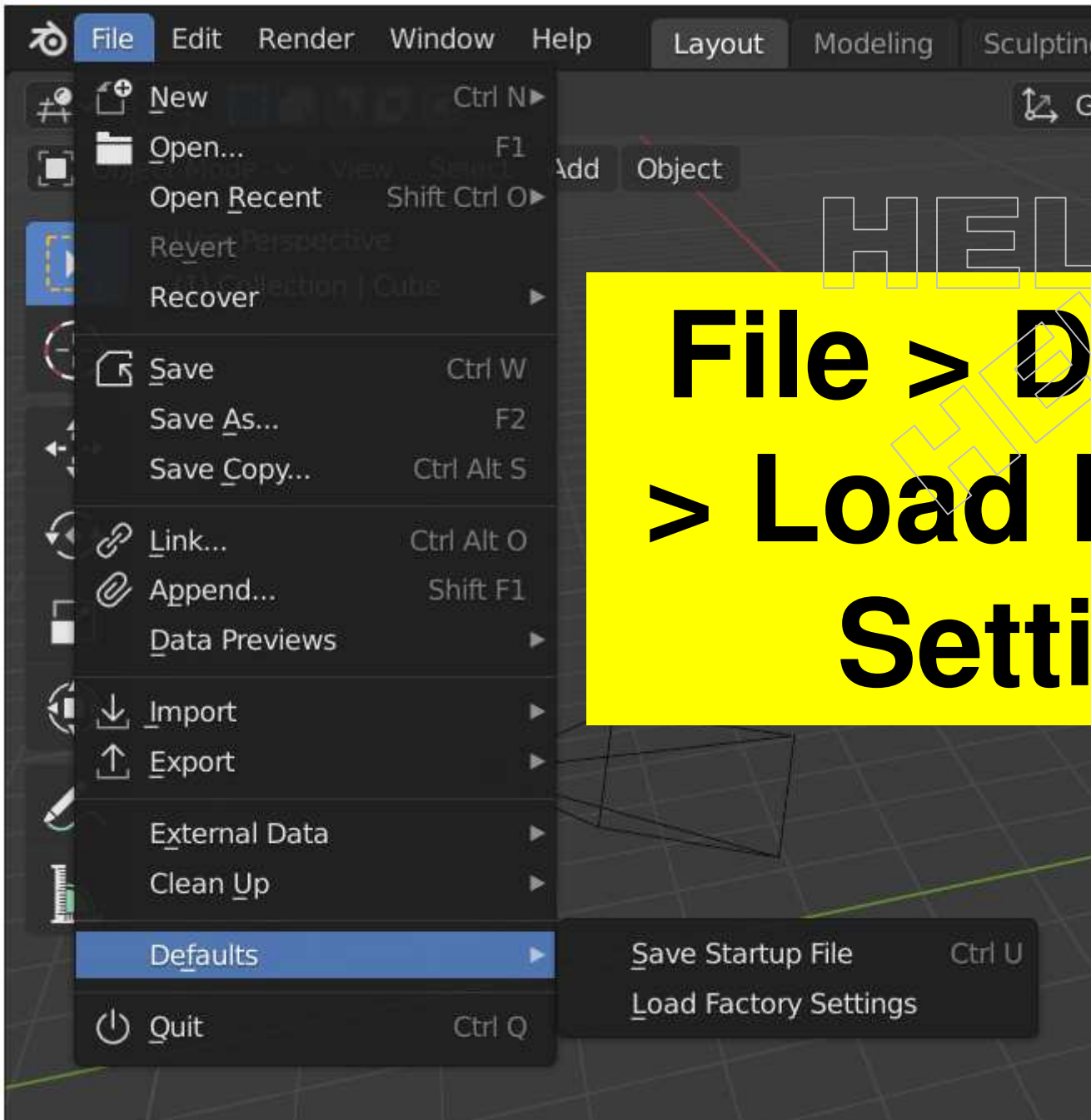
- przy innych ustawieniach



Edit > Preferences...







**File > Defaults
> Load Factory
Settings**